

# PD800 Series Sliding Door Lock Installation Instructions

Read this guide thoroughly before installation and follow the instructions.

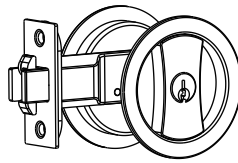
This product is designed for lightweight interior doors. Do not use it on exterior or heavy metal doors.

## Door Thicknesses

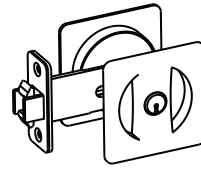
Entry: 35 mm~55 mm

Privacy: 31 mm~51 mm

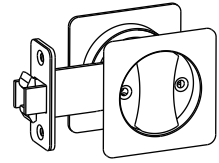
Communicating: 31 mm~51 mm



Entry







Entry



Knob Turn

Select the length of mounting screws based on the thickness of the door.

Door thicknesses	Length of mounting screw
31~35 mm	 12 mm
35~40 mm	 18 mm
40~45 mm	 22 mm
45~55 mm	 28 mm

## Tailpiece lengths (Entry)

Door thicknesses	Length
35~41 mm	23 mm
41~48 mm	31 mm
48~55 mm	39 mm

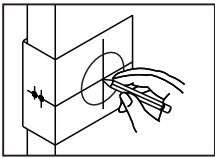
## (Privacy)

Door thicknesses	Length
31~36 mm	29 mm
36~44 mm	37 mm
44~51 mm	45 mm

## (Communicating)

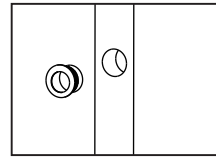
Door thicknesses	Length
31~42 mm	30 mm
42~51 mm	42 mm

## Mark Door with Template



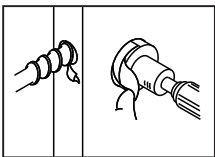
Fold the paper guide and place it on the corner of the door 914mm from the floor (from floor to center of drilling point indicated by pencil in illustration). Make markings on the face and side of the door with the holes on the paper guide.

## Install the Sliding Door Finger Pull



Install the finger pull on the side of the door. Drill a hole 25 mm in diameter and in depth 150 mm above the center of the lock, and then press the finger pull into the hole. (Optionally use construction adhesive to further secure the installation.)

## Drill Holes



Drill the 54 mm diameter lock body hole on the face of the door and the 25 mm diameter latch bolt hole on the side of the door as indicated by the markings.

