

DPE1061

Varied, Straight Door Pull

PULLS

Standard Finishes:

- 630
- 629
- 622
- 695

Optional Finishes:

- 605
- 606
- 609
- 619
- Consult factory for additional finish options



Material:

Stainless Steel, Brass

Ordering:

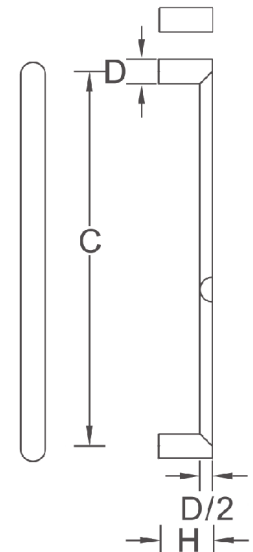
Specify CTC

Additional Information:

Available in 12" and 20"

Size Information:

- D: 1" (25mm)
- D/2: .5" (13mm)
- C: 12" or 20" (300mm or 500mm)
- H: 2.56" (65mm)



Scan Here For



Frascio Architectural
Door Pull Catalog