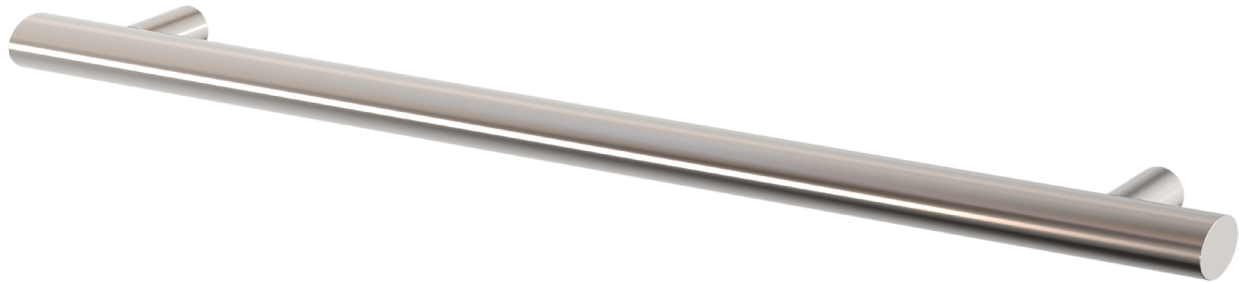


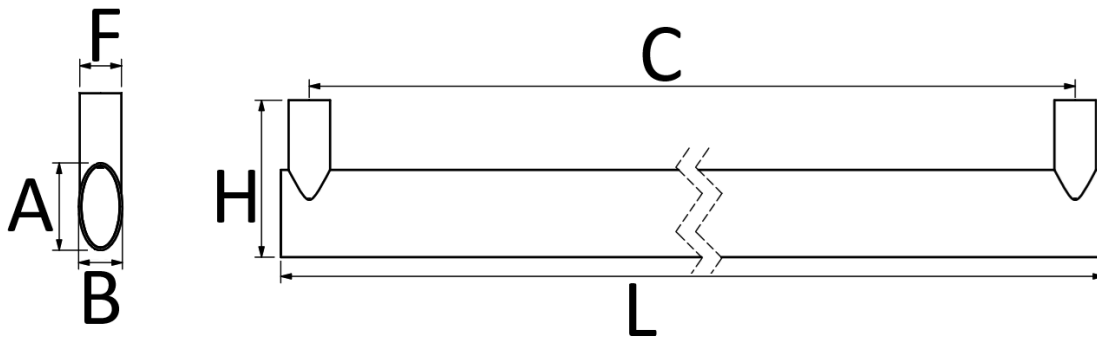


# DPD4015

## Straight, Oval Push Bar



PULLS



**Standard Finishes:**

- 630
- 629
- 622
- 695

**Material:**

Stainless Steel, Brass

**Additional Information:**

Maximum Length: 48"

**Optional Finishes:**

- 605
- 606
- 609
- 619
- Consult factory for additional finish options

**Ordering:**

Specify CTC and overall length

**Size Information:**

- A: 1.58" (40mm)
- B: .79" (20mm)
- C: Per Project Specification
- H: 2.36" (60mm)
- L: Per project Specification
- F: 1" (25mm)

Scan Here For



Frascio Architectural  
Door Pull Catalog