

# DPC1043

## Straight, Rectangular Door Pull

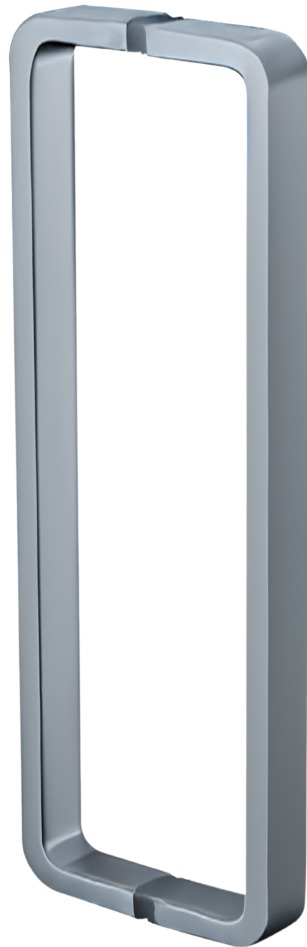
PULLS

### Standard Finishes:

- 630
- 629
- 622
- 695

### Optional Finishes:

- 605
- 606
- 609
- 619
- Consult factory for additional finish options



### Material:

Stainless Steel, Brass

### Ordering:

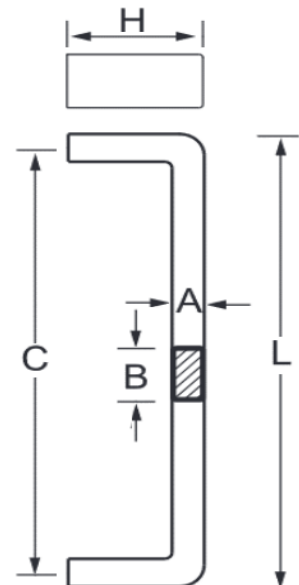
Specify CTC and overall length

### Additional Information:

Maximum Length: 24"

### Size Information:

- A: 1" (25mm)
- B: .52" (13mm)
- C: Per Project Specification
- H: 2.17" (55mm)
- L: Per Project Specification



Scan Here For



Frascio Architectural  
Door Pull Catalog