

# DPA1011

## Straight, Round Door Pull

PULLS

### Standard Finishes:

- 630
- 629
- 622
- 695

### Optional Finishes:

- 605
- 606
- 609
- 619
- Consult factory for additional finish options



### Material:

Stainless Steel, Brass

### Ordering:

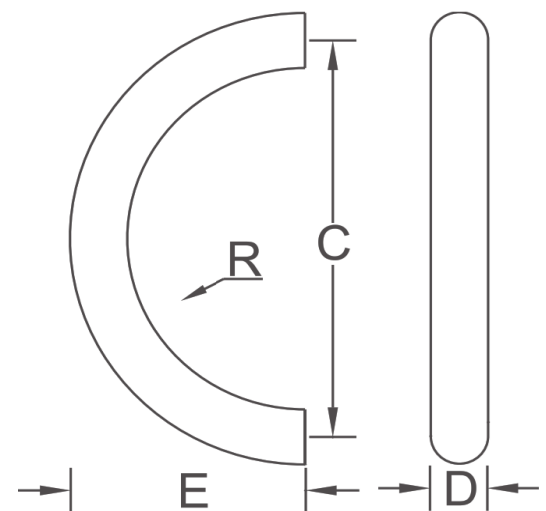
Specify CTC and overall length

### Additional Information:

One Size Only

### Size Information:

- D: 1" (25mm)
- C: 7" (180mm)
- R: 3" (78mm)
- E: 4" (108mm)



Scan Here For



Frascio Architectural  
Door Pull Catalog