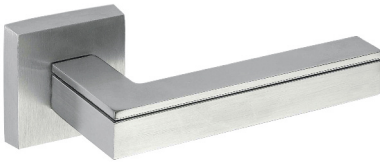


# 6216 | Novara

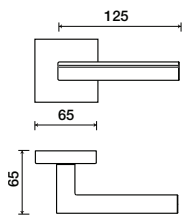
LEVERS



Shown in Satin Stainless finish

### Standard rose system

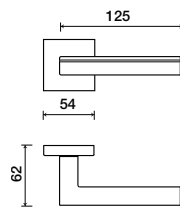
Lever with 65 mm square rose for standard tubular 2-1/8" door prep



See "Rose Options" page for available rose options

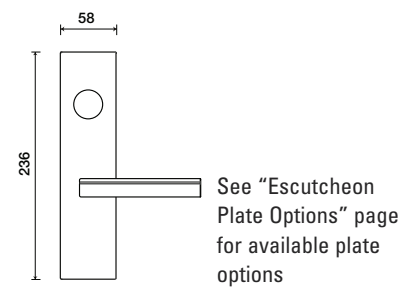
### Small rose system

Lever with 54 mm square rose for mortise and custom tubular door prep



### Escutcheon plate system

Lever with plate for mortise functions



### Tubular leversets ordering example:

Novara lever on a standard rose, passage function, in satin stainless finish with 2-3/4" backset

6216	1912Q	PA	630	2-3/4	
Lever design	Rose/Plate	Function	Finish	Backset	Misc.
Novara 6216	1912Q (65 mm) 1912 (65 mm) SMQ (54 mm) SM (52 mm)	PA (Passage) PY (Privacy) FD (Full Dummy) SD (Single Dummy)	Per project specification	2-3/8" 2-3/4"	