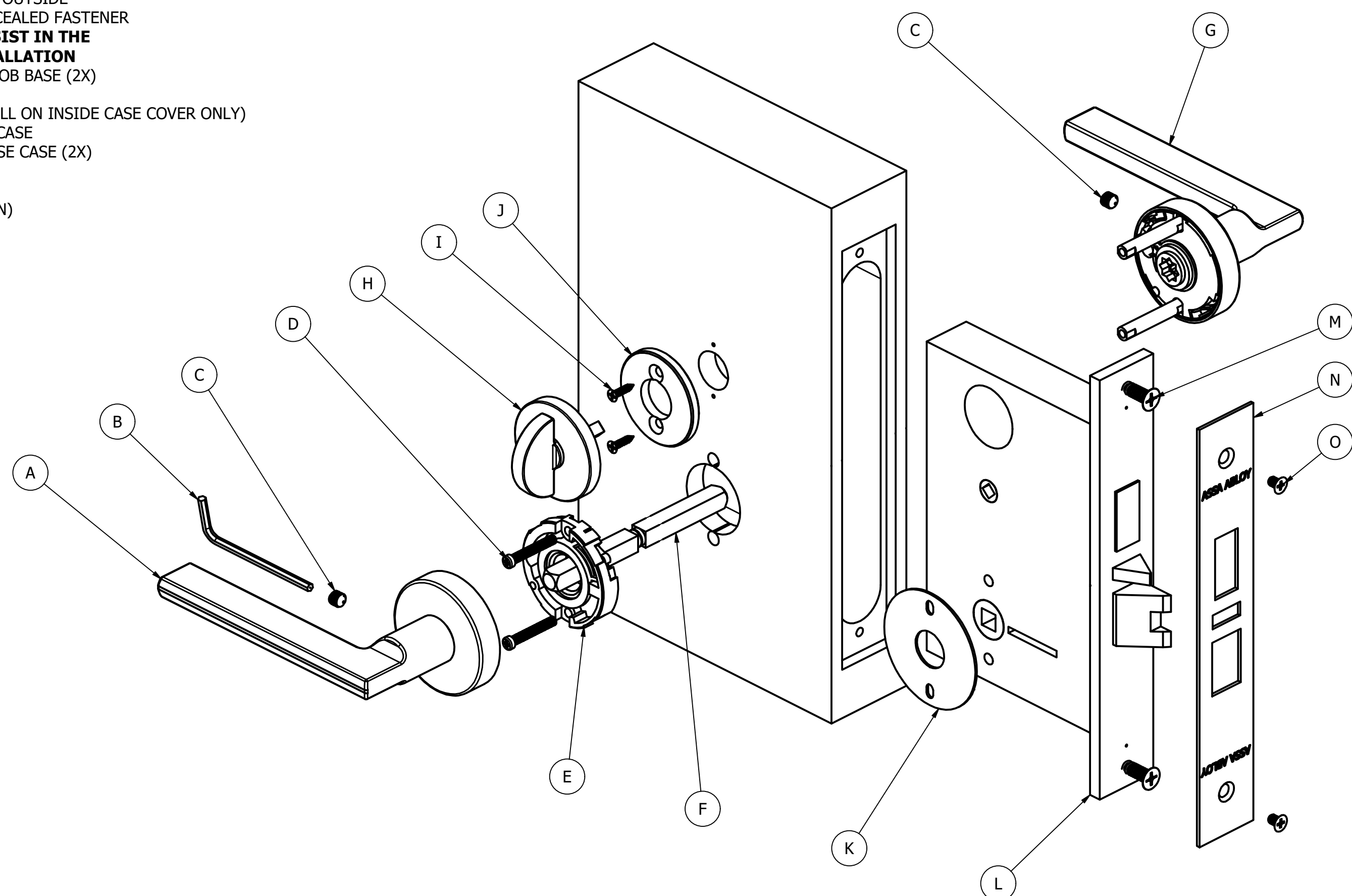


- A) LEVER x SM TRIM SUB-ASSY, INSIDE
- B) HEX WRENCH
- C) M6 SET SCREW (2X)
- D) M4 FASTENERS (2X)
- E) 1919-38 BACKPLATE, INSIDE
- F) SPINDLE, VING SUPPLIED
- G) LEVER x SM TRIM SUB-ASSY, OUTSIDE
- H) TURN KNOB SUB-ASSY, CONCEALED FASTENER
- I) **NOTE: USE IT-379 TO ASSIST IN THE TURN KNOB INSTALLATION**
- J) #4 FASTENERS FOR TURN KNOB BASE (2X)
- K) CONCEALED FASTENER BASE
- L) UL FIREDOOR GUARD (INSTALL ON INSIDE CASE COVER ONLY)
- M) VING/ASSA ABLOY MORTISE CASE
- N) MOUNTING SCREWS, MORTISE CASE (2X)
- O) FACEPLATE
- P) SCREWS, FACEPLATE (2X)
- Q) STRAP WRENCH (NOT SHOWN)

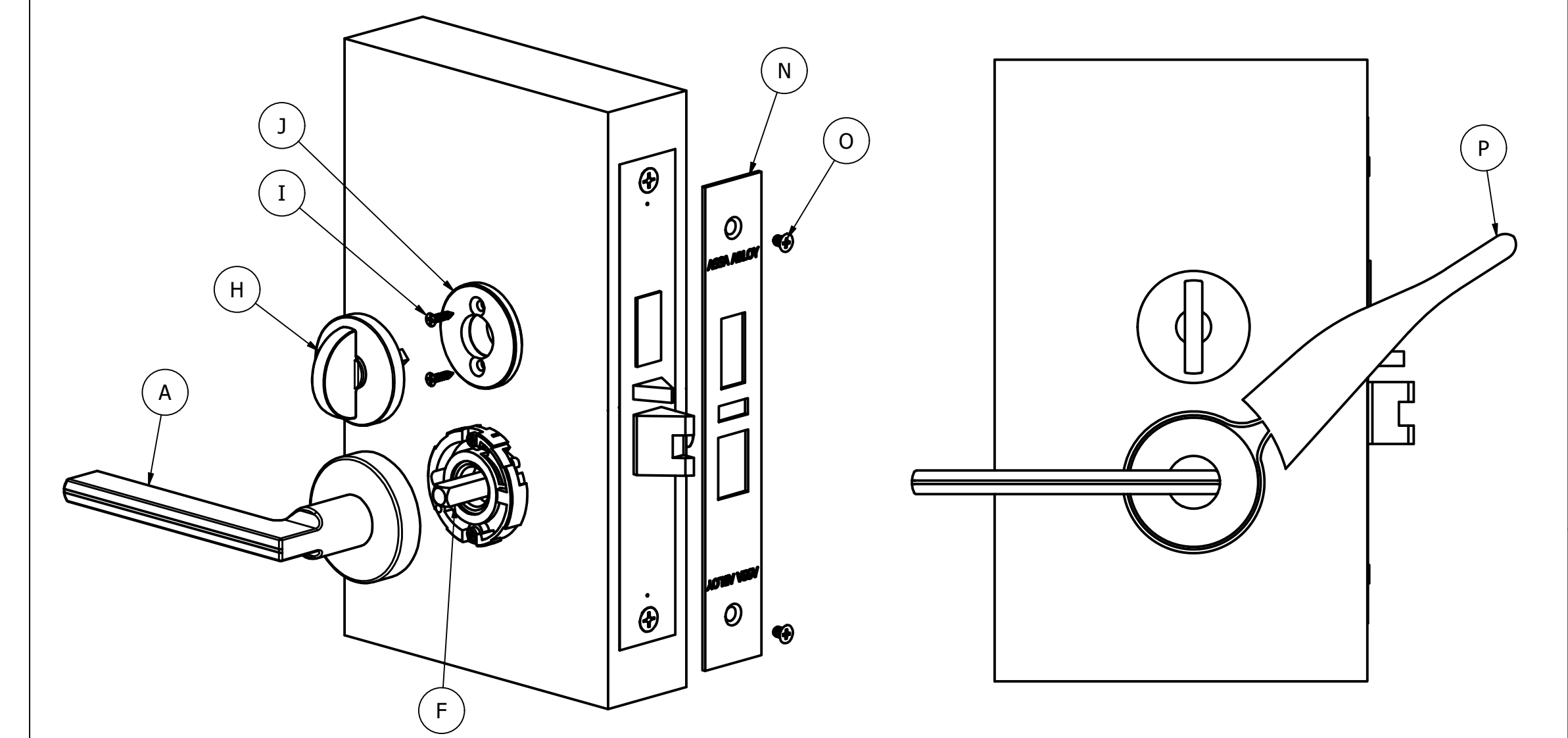


Description:
**MORTISE "DA" MOUNTING INSTALLATION
 (VING ANSI MOUNTING)**

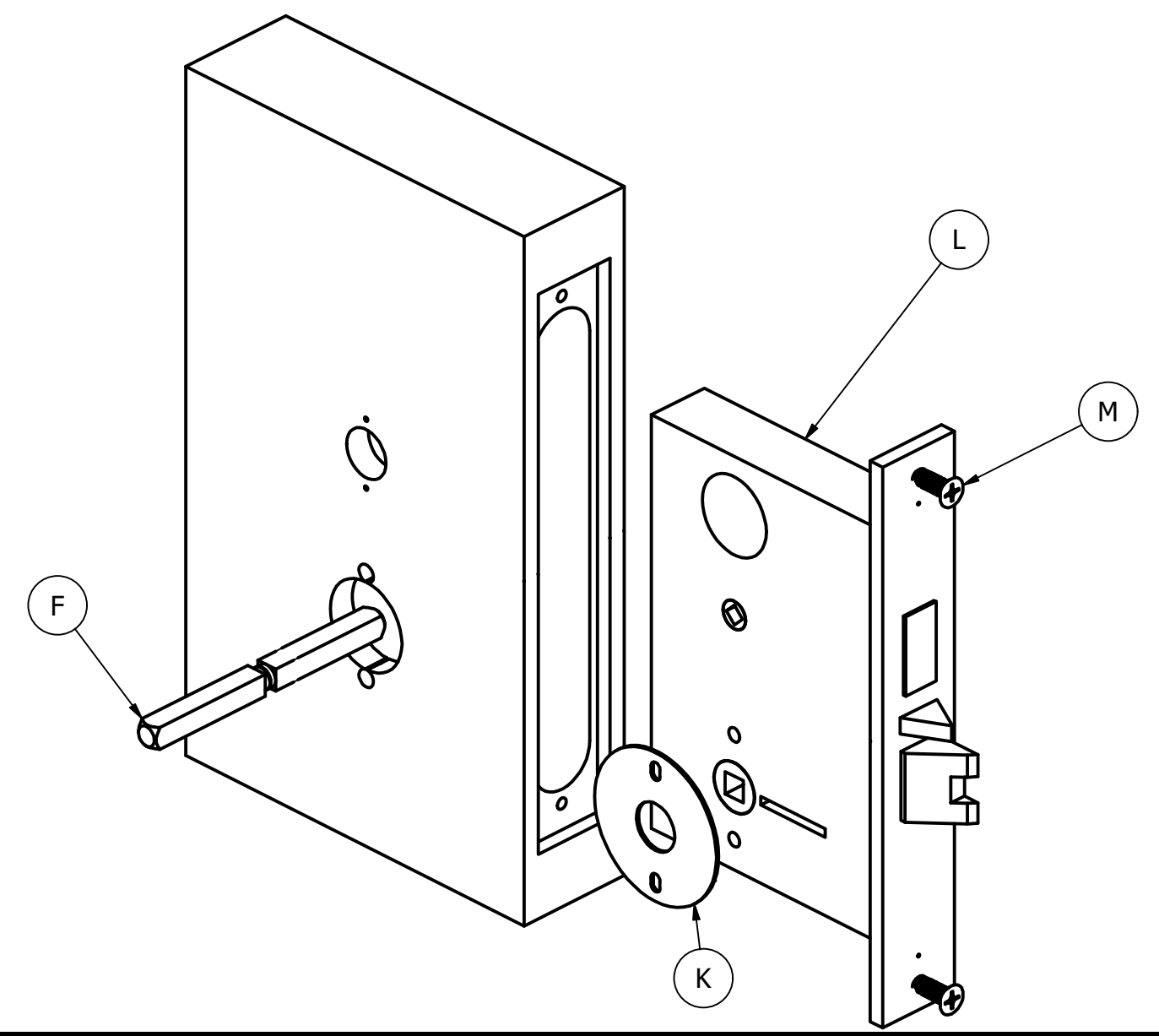


Drawing No: IT-524	
Drawn By: JWB	Orig.Date 12-02-25
Rev. Date:	Rev.:

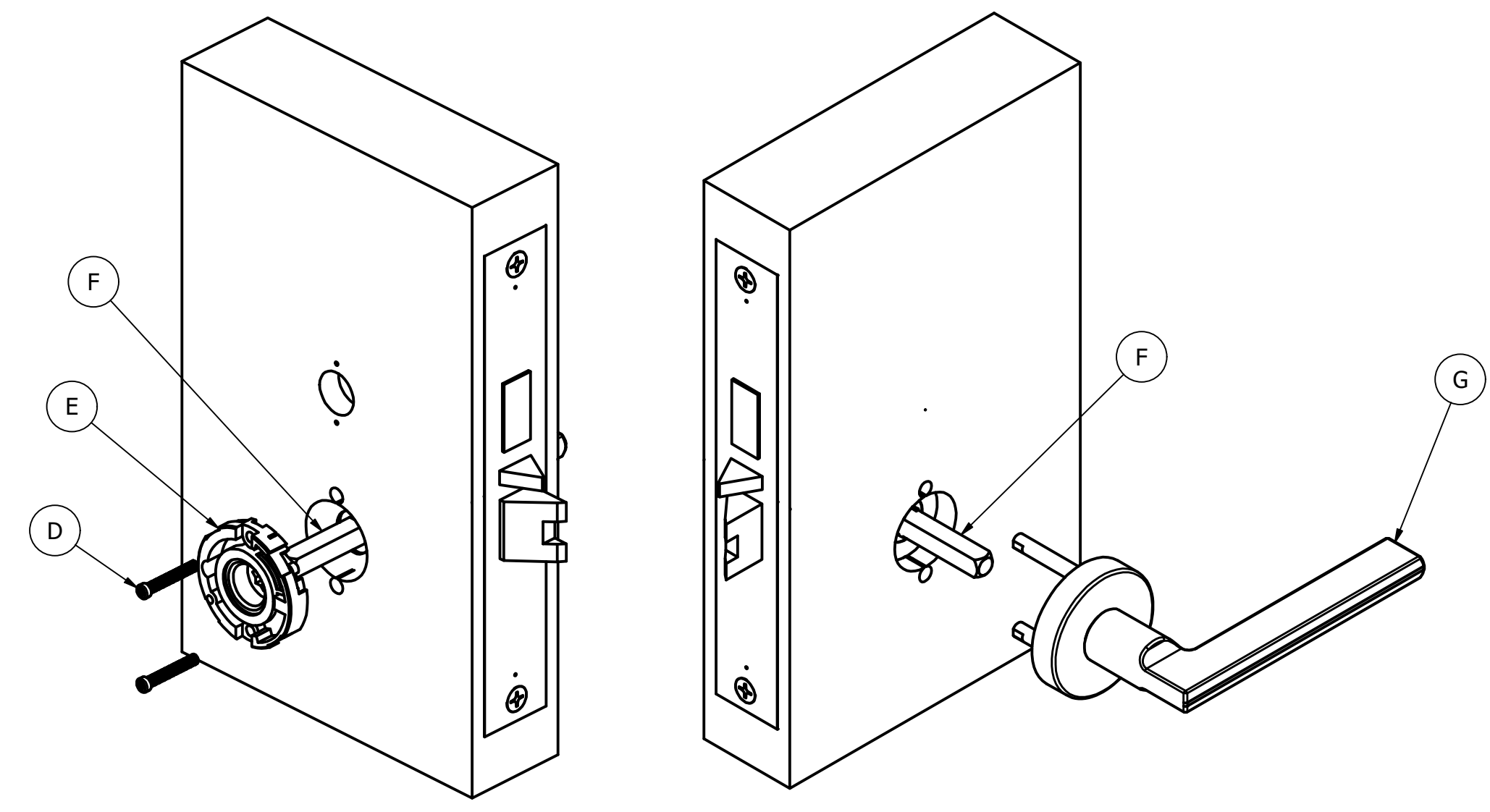
- STEP 3)
- 1) POSITION THE TURN KNOB MOUNTING BASE, "J", OVER THE TURN KNOB HOLE AND INSERT THE 2X FASTENERS "I".
(REFER TO IT-379, STEP 1, FOR PROPER HOLE LOCATION AND DRILLING FOR CONCEALED MOUNT TURN KNOB)
 - 2) ALIGN THE TURN KNOB "H" SO THAT IT IS IN THE VERTICAL POSITION AND INSERT INTO THE TURN KNOB SPINDLE HUB IN THE MORTISE CASE.
 - 3) CAREFULLY THREAD ON THE TURN KNOB TRIM ROSETTE UNTIL IT SEATS AGAINST THE DOOR SURFACE. GRIP AND TIGHTEN FIRM.
 - 4) POSITION THE INSIDE LEVER TRIM "A" OVER THE SPINDLE "F" AND PUSH FLAT AGAINST THE DOOR SURFACE. YOU MAY HAVE TO ROTATE THE ROSE TO ALLOW IT TO SEAT AGAINST THE DOOR SURFACE.
 - 5) USING THE SUPPLIED STRAP WRENCH "P" INSERT OVER THE LEVER TRIM "SM" ROSE AND TIGHTEN THE STRAP ON THE WRENCH. ROTATE "CW" (CLOCKWISE) APPROXIMATELY 15-20 DEGREES UNTIL ROSE IS SEATED AND WILL NOT LONGER ROTATE.
 - 6) INSTALL THE FACEPLATE "N" USING THE SMALL SCREWS "O".
 - 7) TEST LOCKSET FOR NORMAL OPERATION.



- STEP 1:
- 1) PREPARE THE DOOR FOR THIS SPECIFIC LEVER TRIM, DP-192, AND CONCEALED MOUNT TURN KNOB TRIM IT-379. ALL OTHER DOOR PREP INFORMATION, USE EXISTING VING MORTISE DOOR PREP TEMPLATE.
 - 2) INSTALL THE UL FIREDOOR GUARD "K" TO THE INSIDE MORTISE CASE "L" BEFORE INSTALLING INTO DOOR. ALIGN THE MOUNTING HOLES WITH THE CASE THRU BOLT HOLES, REMOVE THE ADHESIVE BACKING AND CAREFULLY ALIGN WITH CLEARANCE MOUNTING HOLES.
 - 3) INSERT THE MORTISE CASE "L" INTO THE DOOR CAVITY AND INSERT THE 2 CASE MOUNTING SCREWS, "M".
 - 4) INSERT THE VING SUPPLIED SPINDLE "F" AS INSTRUCTED BY THE ORIGINAL VING INSTRUCTIONS.



- STEP 2)
1. TAKE OUTSIDE TRIM SUB-ASSY "G" AND INSERT OVER THE SPINDLE "F" WITH THE LEVER IN THE HORIZONTAL POSITION. ALIGN THE 2X THROUGH HOLE MOUNTING POST WITH THE CLEARANCE HOLES. PUSH UP AGAINST THE DOOR SURFACE AND HOLD IN PLACE.
 2. TAKE THE INSIDE MOUNTING BASE "E" AND ALIGN AT THE 12-6 O'CLOCK POSITION. INSERT OVER THE LEVER SPINDLE "F" AND PUSH AGAINST DOOR SURFACE.
 - 3) INSERT THE 2X M4 FASTENERS "D" AND TIGHTEN FIRM. DO NOT OVER-TIGHTEN AS THIS MAY CAUSE THE DOOR TO COMPRESS AND NOT ALLOW PROPER OPERATION OF THE TRIM AND LOCK.



- STEP 4)
- 1) USING THE SUPPLIED HEX WRENCH "B", INSERT THE M6 SET SCREWS "C" INTO THE LEVER AND TIGHTEN FIRMLY FOR BOTH INSIDE AND OUTSIDE LEVERS.
 - 2) OPERATE LOCK AND CHECK FOR NORMAL OPERATION.

