

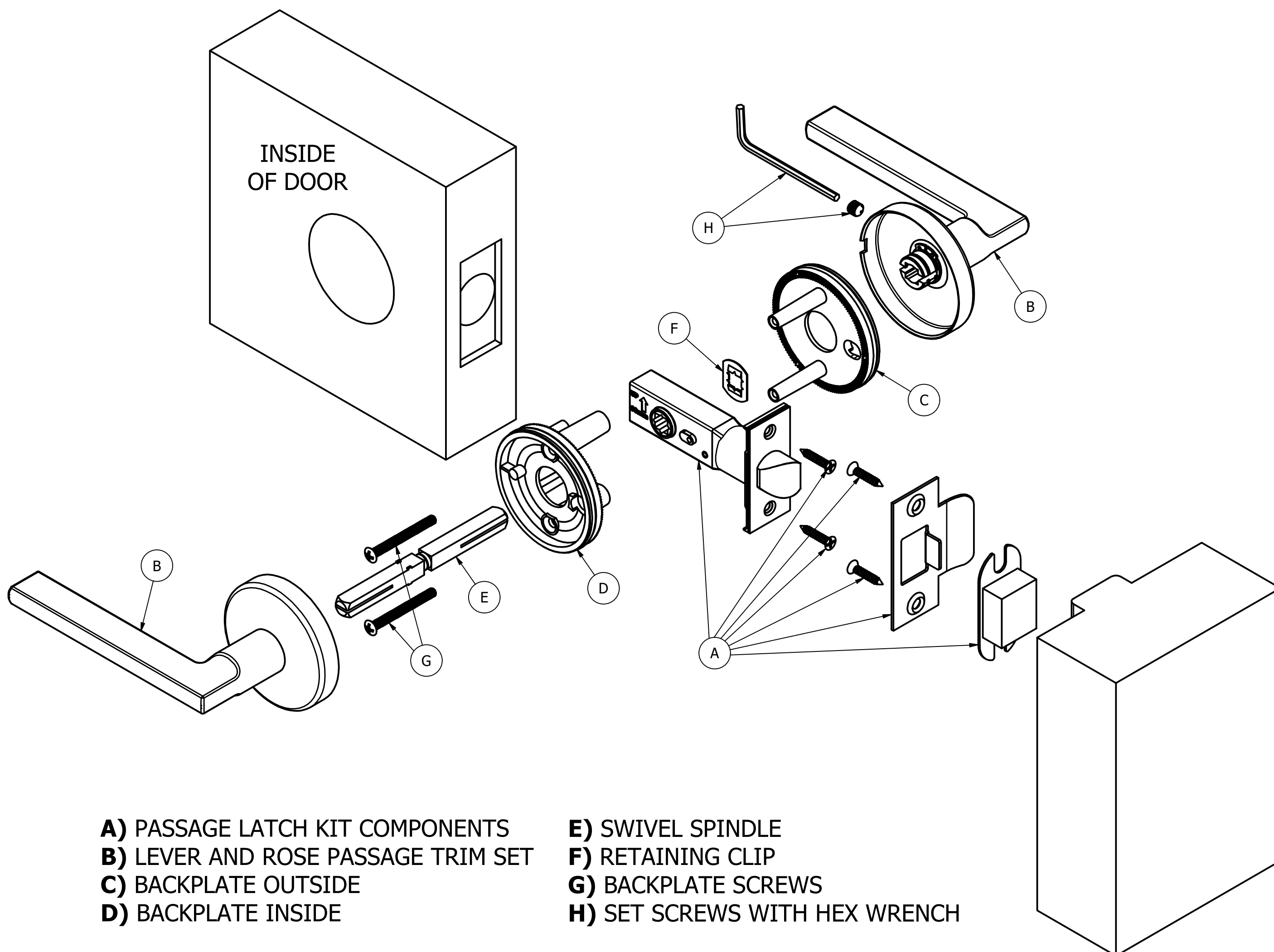
T600

PASSAGE TRIM WITH HL LATCH INSTALLATION INSTRUCTIONS

FR International

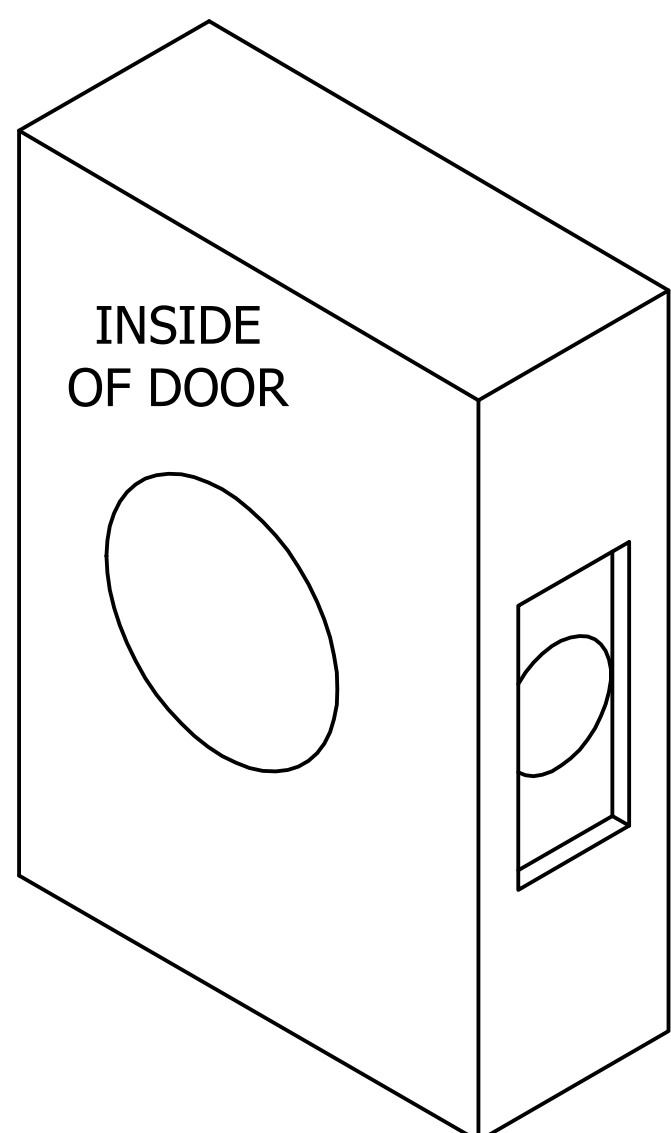
IT-442 LAST REVISED
01-03-24 JDK

CAREFULLY READ THE INSTRUCTIONS BEFORE INSTALLING



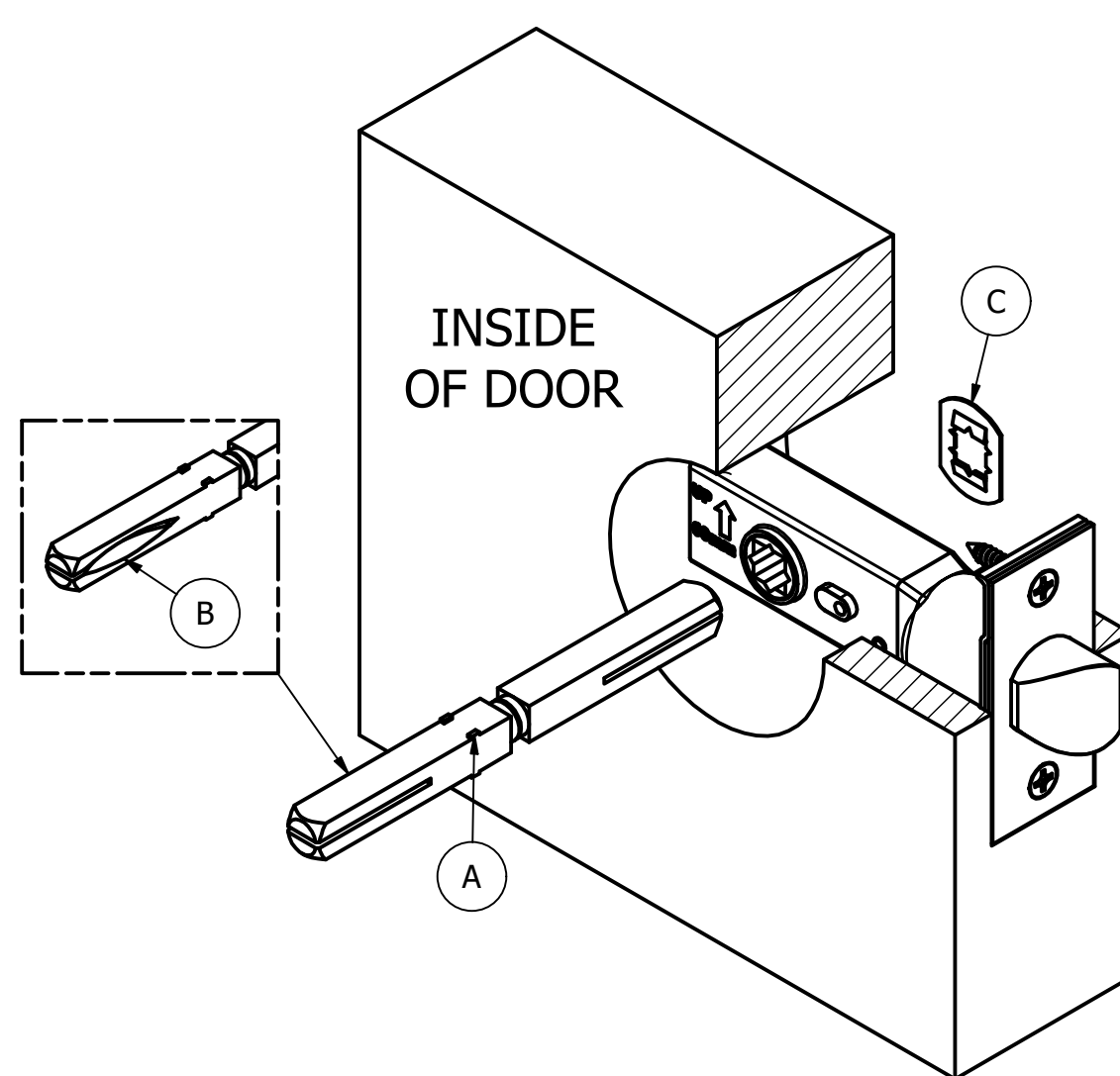
- A) PASSAGE LATCH KIT COMPONENTS**
- B) LEVER AND ROSE PASSAGE TRIM SET**
- C) BACKPLATE OUTSIDE**
- D) BACKPLATE INSIDE**

- E) SWIVEL SPINDLE**
- F) RETAINING CLIP**
- G) BACKPLATE SCREWS**
- H) SET SCREWS WITH HEX WRENCH**

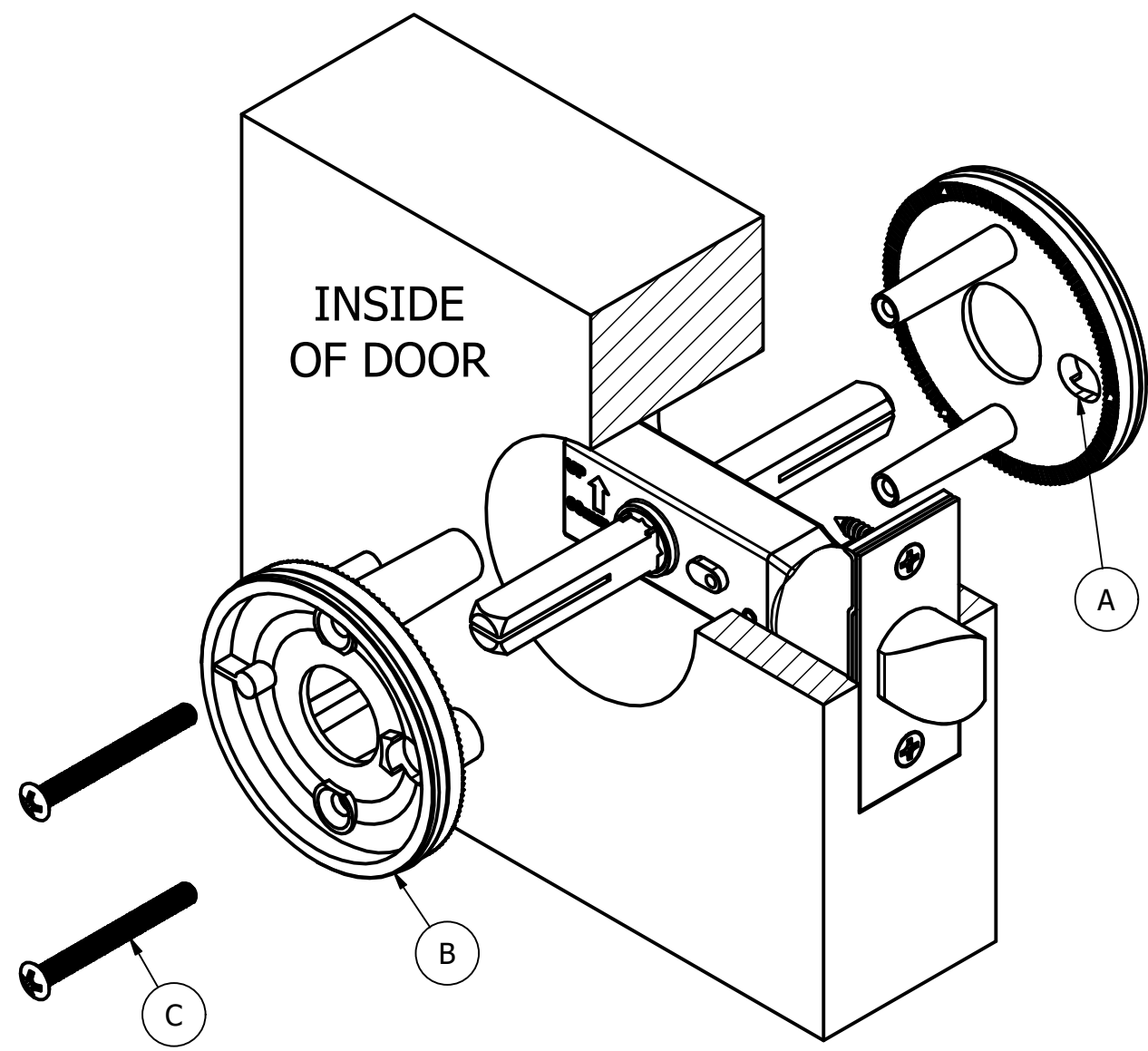


STEP 1)
PREPARE THE DOOR ACCORDING
TO THE SUPPLIED TEMPLATE.

STEP 2)
INSERT THE LATCH (A) INTO THE EDGE BORE WITH THE
EMBOSSED ARROW (B) POINTING UP. USE THE SUPPLIED
SCREWS (E) TO SECURE THE LATCH. **NOTE:** THE BOLT (C) CAN BE
ROTATED FOR THE DESIRED HANDING BY FIRST TWISTING OFF
THE FACEPLATE (D), ADJUSTING, THEN REPLACING.

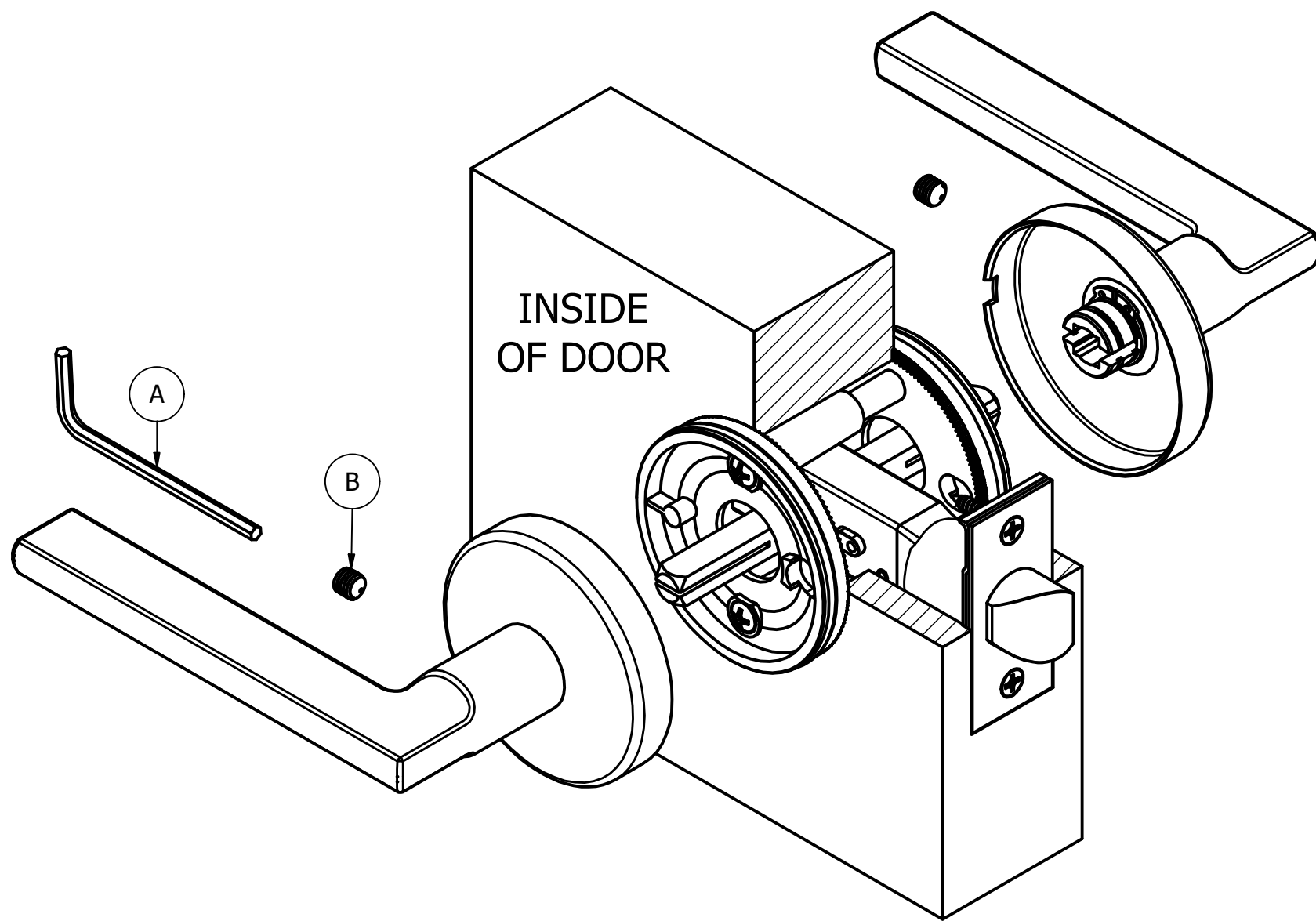


STEP 3)
INSERT THE END OF THE PASSAGE SPINDLE WITHOUT NOTCHES
(A) INTO THE LATCH FROM THE INSIDE OF THE DOOR, GROOVED
CUTOUT (B) FACING AWAY FROM THE DOOR EDGE, UNTIL IT
STOPS. SECURE THE SPINDLE BY SLIDING THE RETAINING CLIP
(C) ONTO THE OUTSIDE END OF THE SPINDLE UNTIL SNUGLY
SEATED AGAINST THE LATCH.



STEP 4)

SLIDE THE BACKPLATES ONTO THE SPINDLE, ORIENTED SO THAT THE PRIVACY HOLES (A) ARE CLOSEST TO THE DOOR EDGE. BE SURE THAT THE INSIDE PLATE (B) IS ON THE INSIDE OF THE DOOR. FASTEN THE BACKPLATES TOGETHER USING THE PROVIDED SCREWS (C).

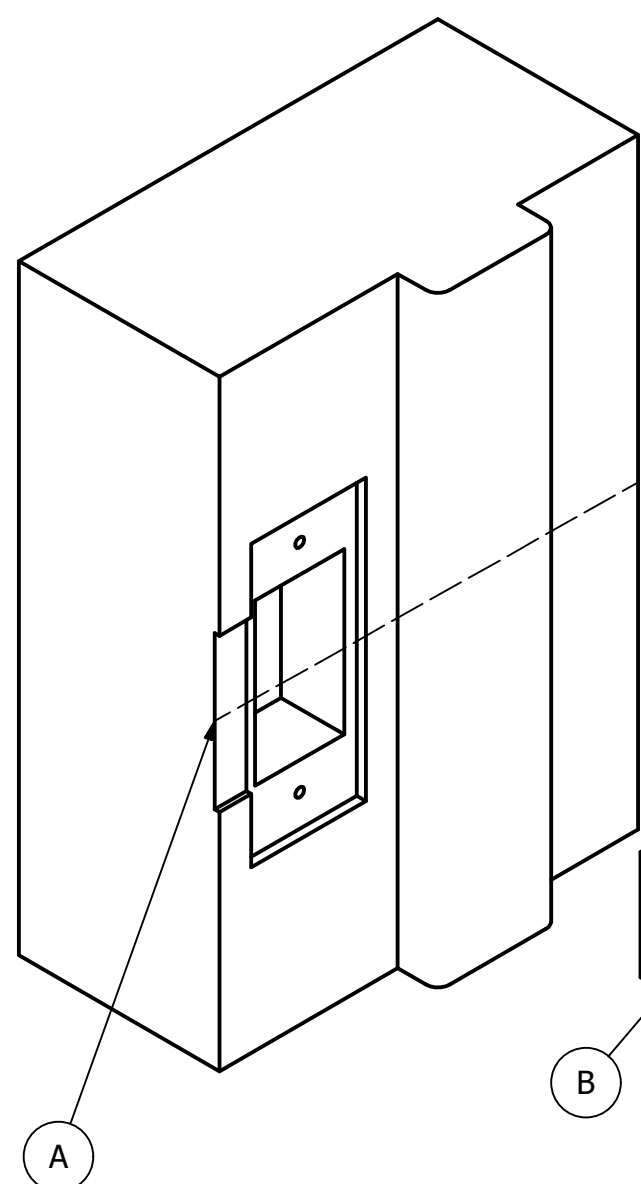


STEP 5)

SLIDE THE LEVER AND ROSE TRIM SETS ONTO THE BACKPLATES FLUSH AGAINST THE DOOR. USE THE HEX WRENCH (A) TO FASTEN THE SET SCREWS (B) INTO THE SET SCREW HOLES ON THE LEVERS.

STEP 6)

OBSERVE THE LEVERS TO DETERMINE IF LEVEL. IF NOT, REMOVE THE LEVER AND ROSE, LOOSEN THE BACKPLATE SCREWS, THEN ROTATE THE BACKPLATES AS NEEDED BEFORE REASSEMBLING.

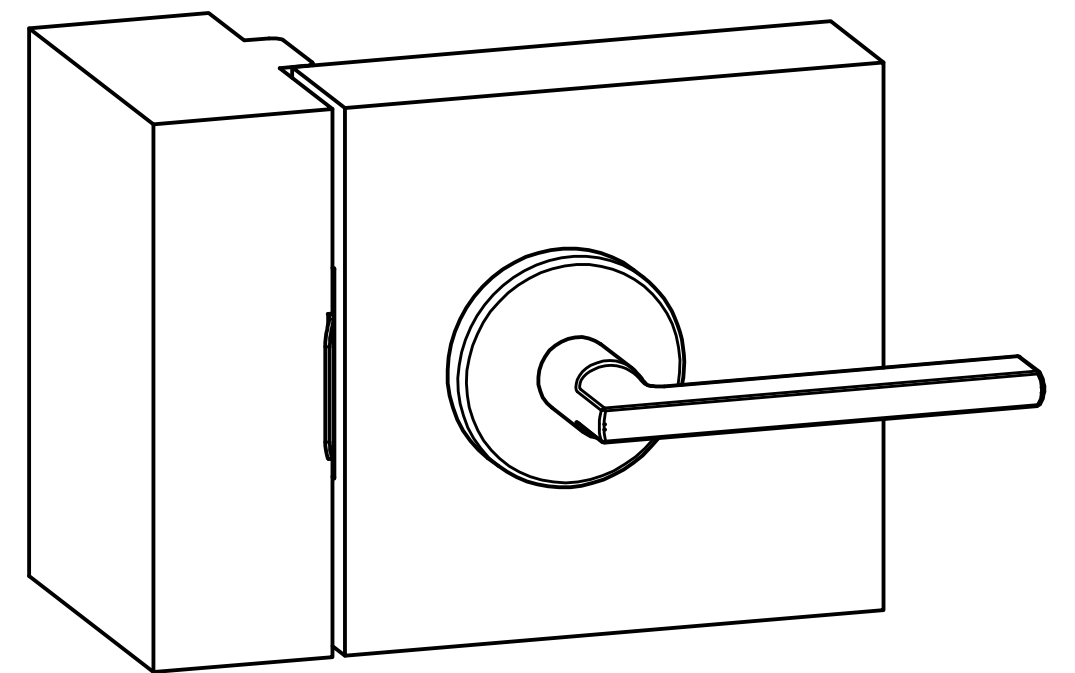
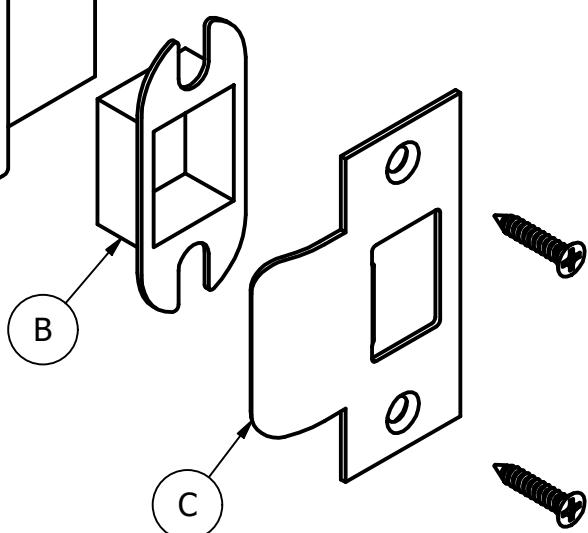


STEP 7)

PREPARE THE DOOR FRAME ACCORDING TO THE STRIKE TEMPLATE, USING THE SAME HORIZONTAL CENTER LINE (A) AS THE LATCH.

STEP 8)

INSERT THE DUST BOX (B) AND STRIKE PLATE (C) INTO THE DOOR FRAME AND FASTEN WITH THE PROVIDED SCREWS. MAKE ANY NEEDED ADJUSTMENTS TO THE DOOR FRAME.



STEP 9)

VERIFY THAT THE LATCH BOLT PROPERLY ENGAGES THE STRIKE PLATE BY CLOSING THE DOOR. IF IT DOES NOT LATCH, MAKE THE NEEDED ADJUSTMENTS.