

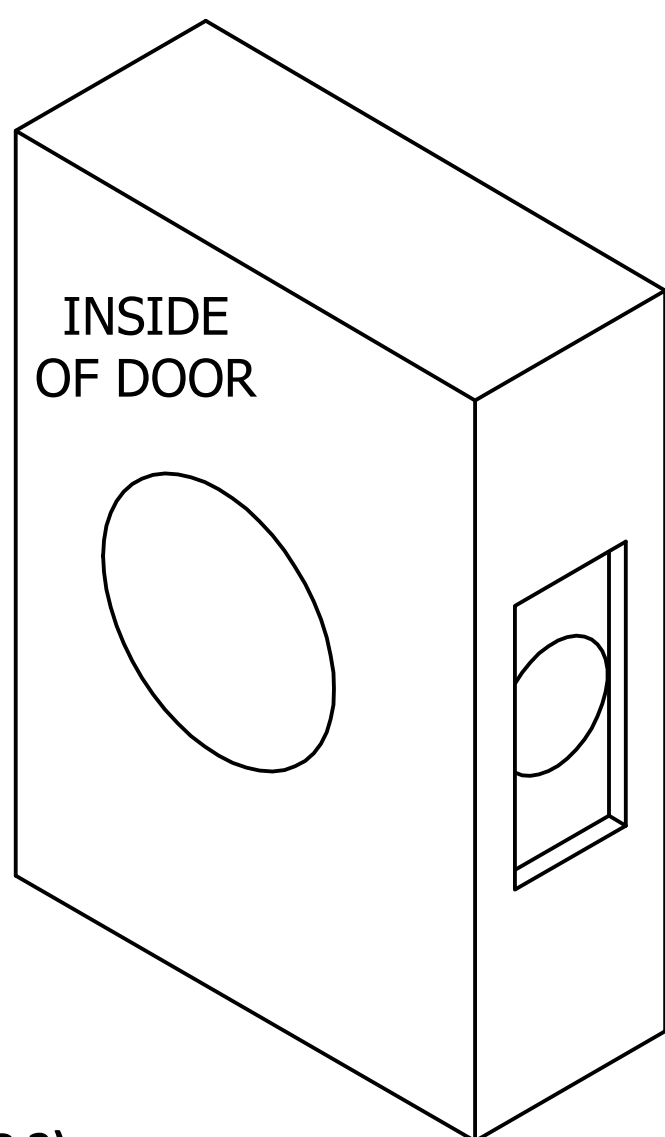
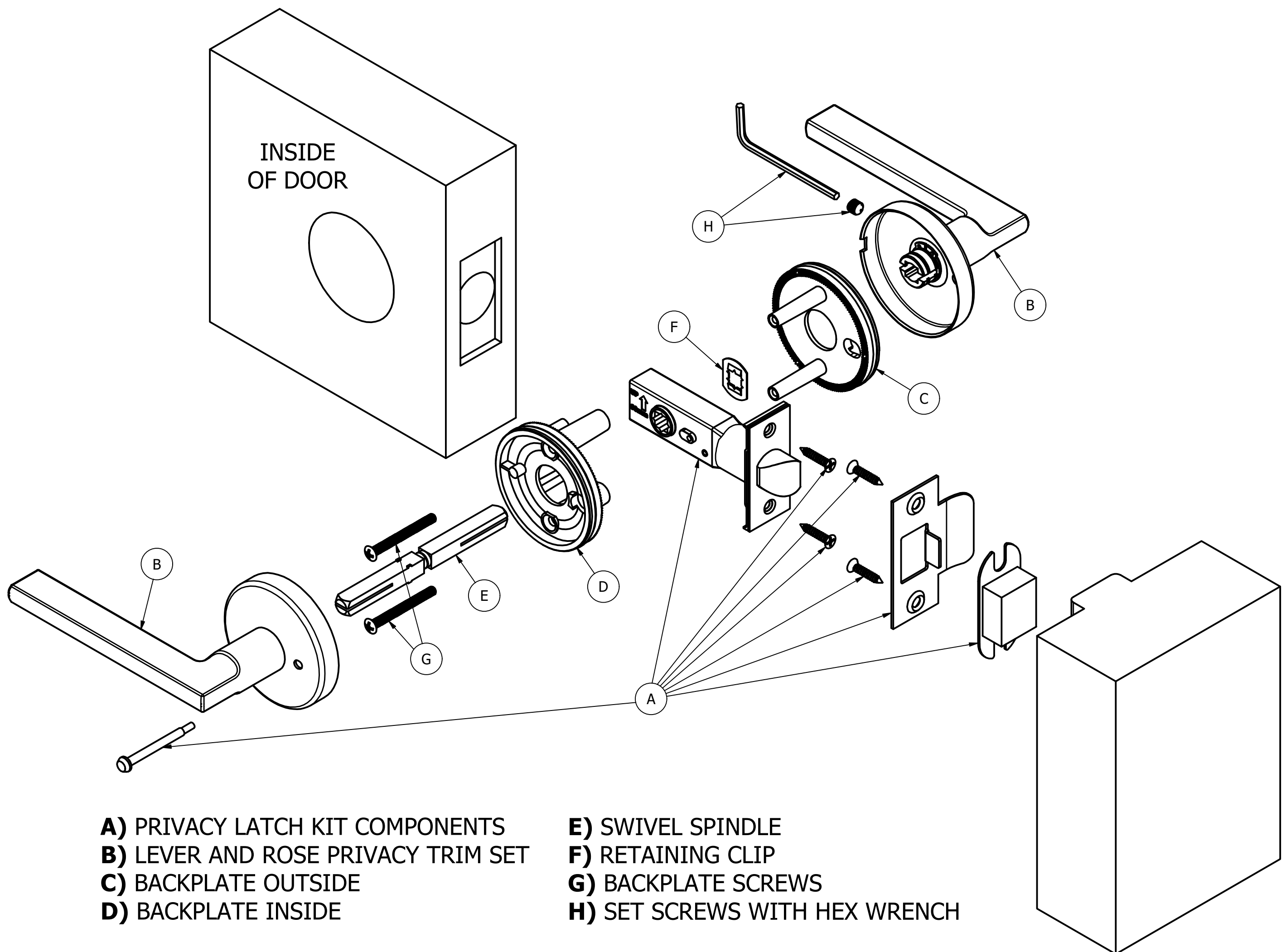
T600

PRIVACY TRIM WITH HL LATCH INSTALLATION INSTRUCTIONS

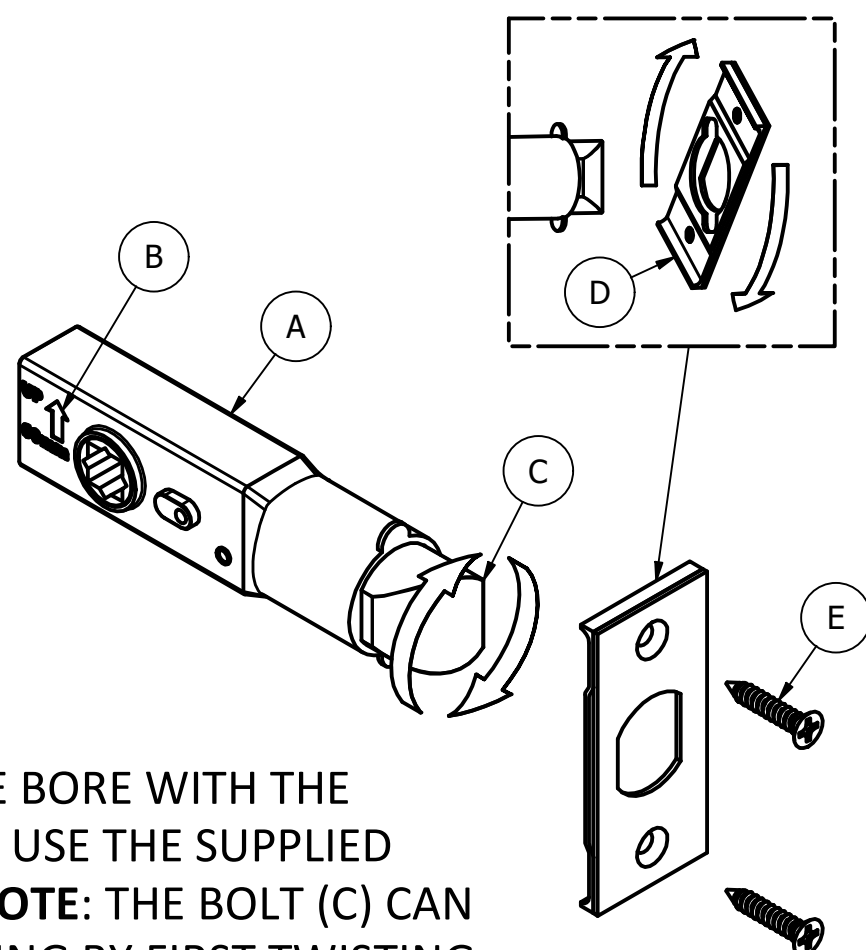
FR International

IT-440 LAST REVISED
01-18-24 JDK

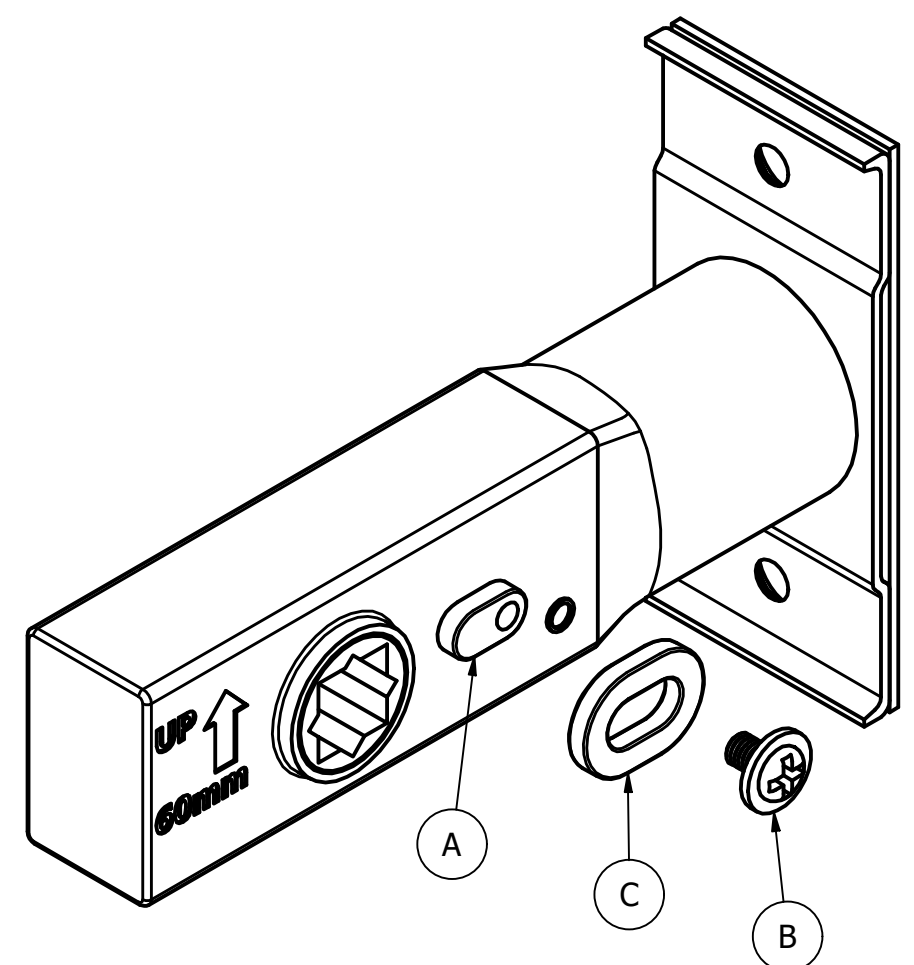
CAREFULLY READ THE INSTRUCTIONS BEFORE INSTALLING



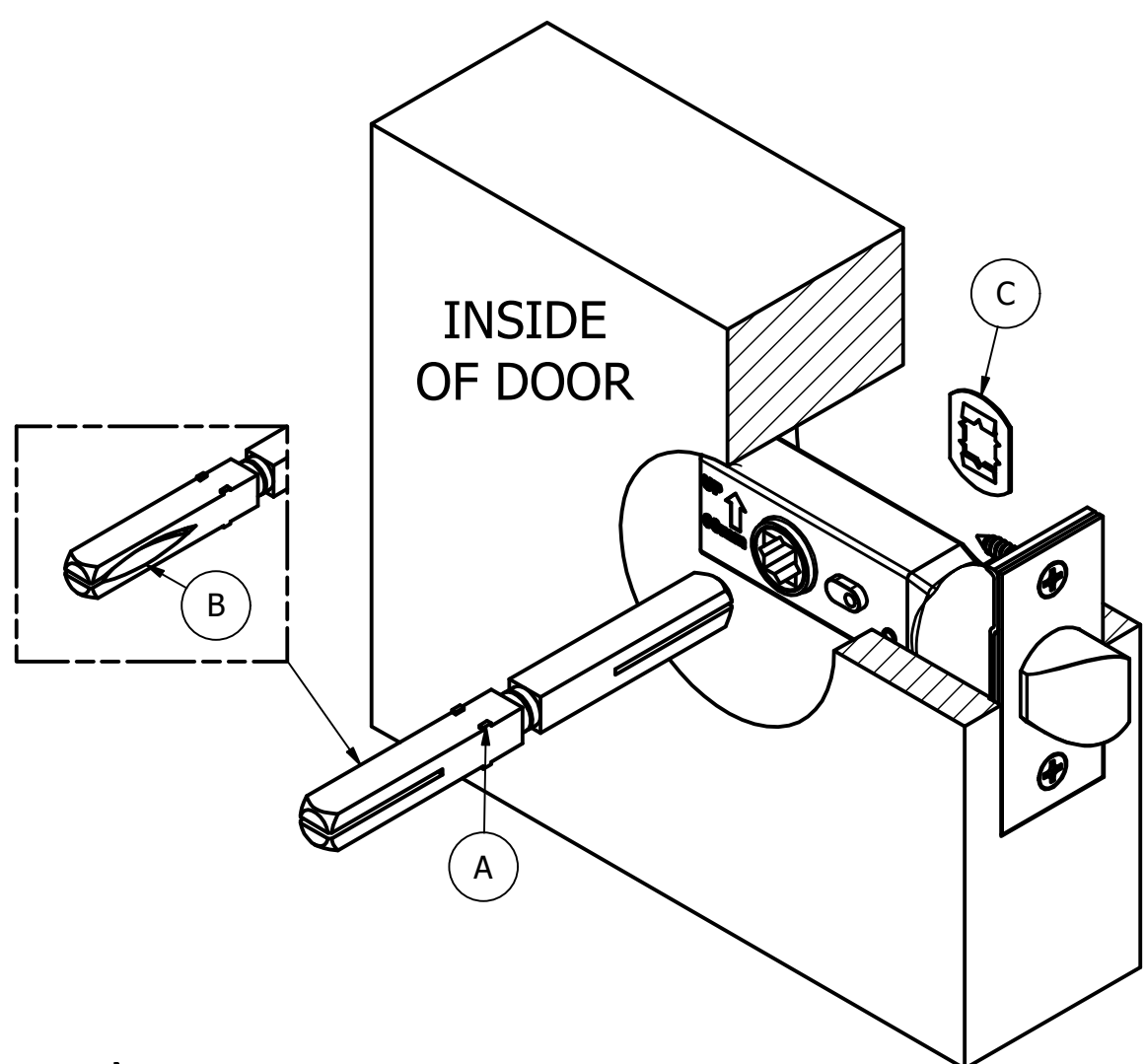
STEP 1)
PREPARE THE DOOR ACCORDING
TO THE SUPPLIED TEMPLATE.



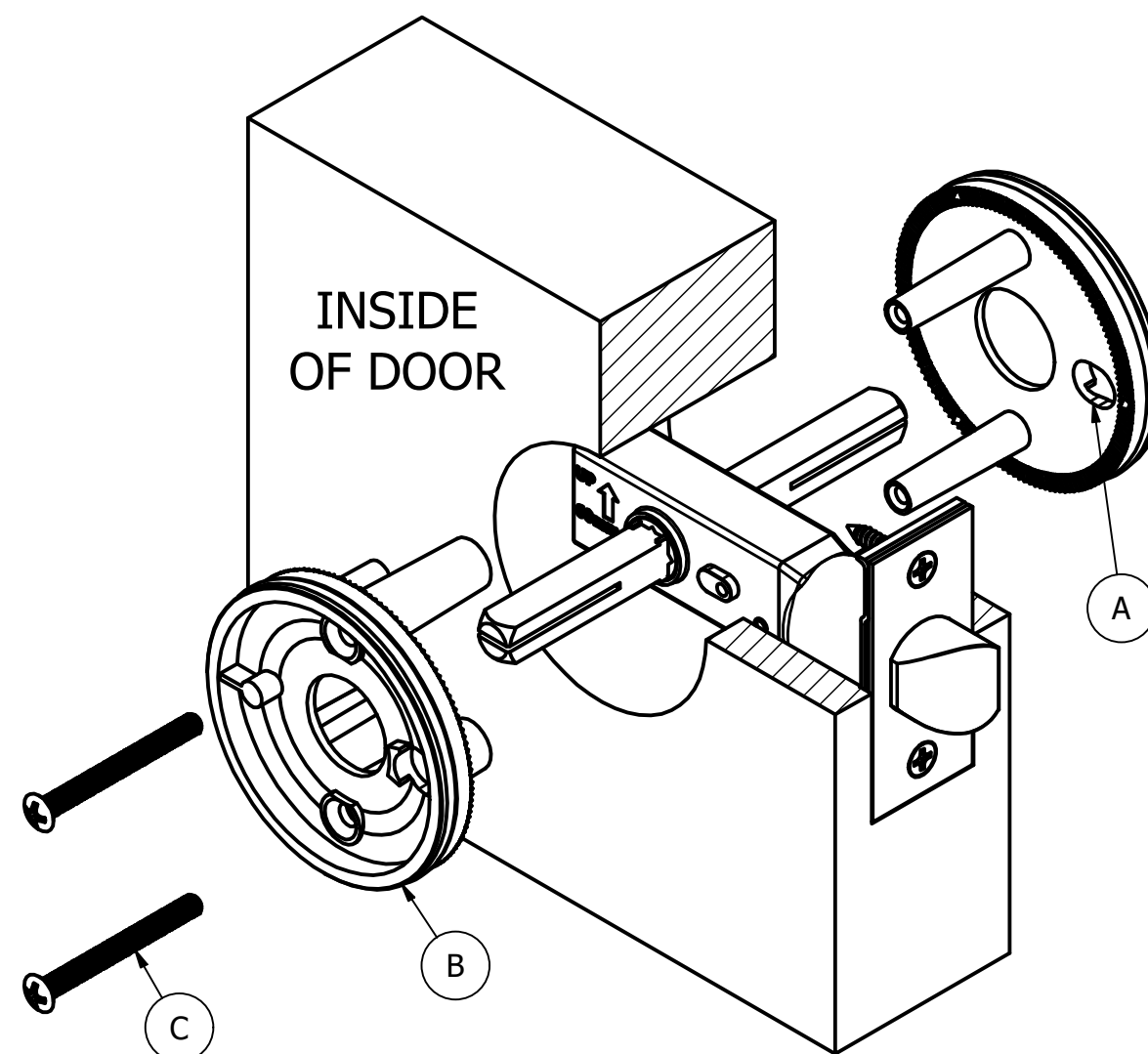
STEP 2)
INSERT THE LATCH (A) INTO THE EDGE BORE WITH THE
EMBOSSED ARROW (B) POINTING UP. USE THE SUPPLIED
SCREWS (E) TO SECURE THE LATCH. **NOTE:** THE BOLT (C) CAN
BE ROTATED FOR THE DESIRED HANDING BY FIRST TWISTING
OFF THE FACEPLATE (D), ADJUSTING, THEN REPLACING.



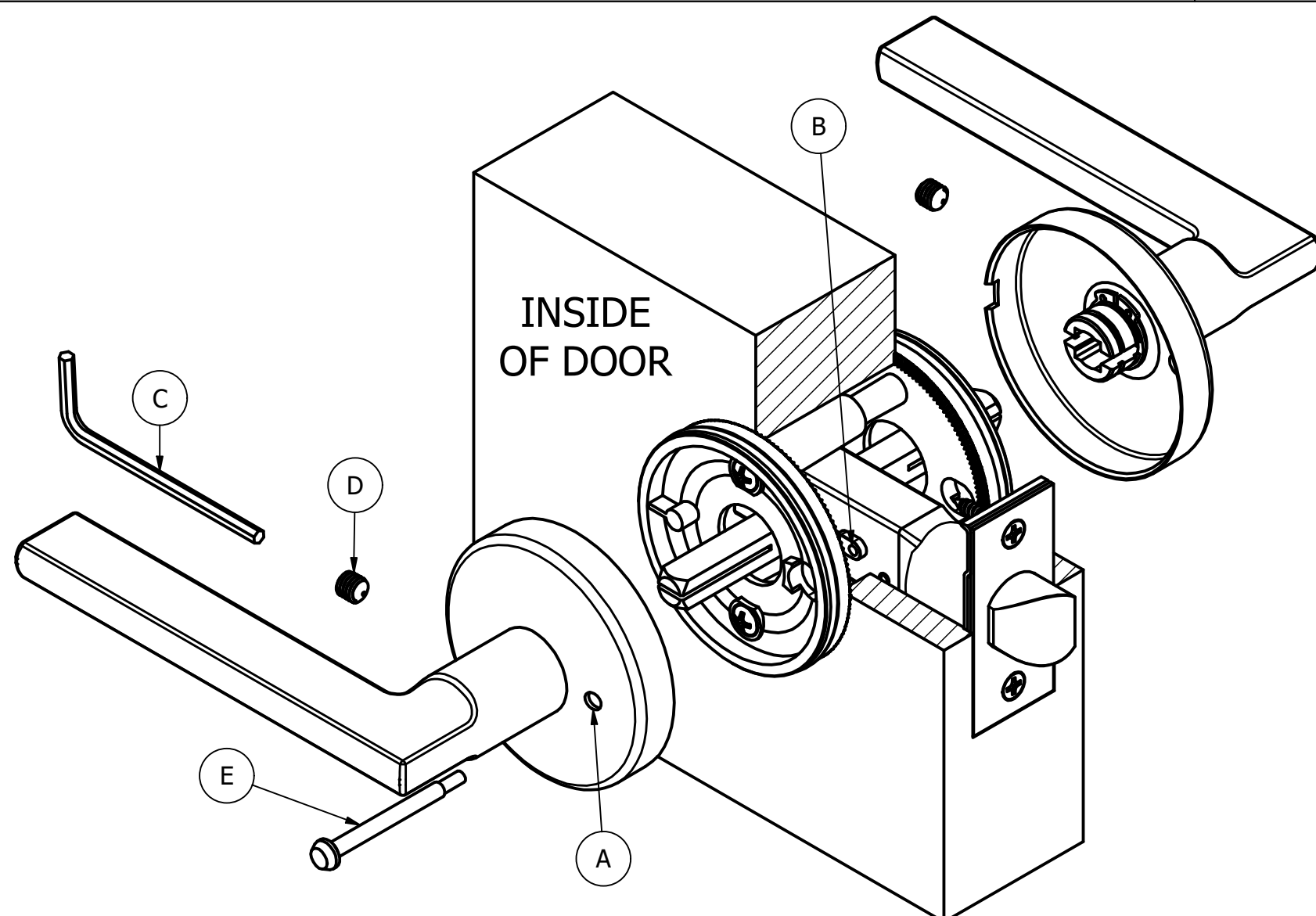
STEP 3)
EXAMINE THE PRIVACY MECHANISM (A) ON THE LATCH
FROM THE *INSIDE* OF THE DOOR. IF THE THREADED HOLE
THAT RECEIVES THE PRIVACY PIN IS OCCUPIED BY THE
SCREW (B) AND SPACER WASHER (C) THESE WILL NEED TO
BE MOVED TO THE EXTERIOR SIDE OF THE LATCH.



STEP 4)
 INSERT THE END OF THE PASSAGE SPINDLE WITHOUT NOTCHES (A) INTO THE LATCH FROM THE INSIDE OF THE DOOR, GROOVED CUTOUT (B) FACING AWAY FROM THE DOOR EDGE, UNTIL IT STOPS. SECURE THE SPINDLE BY SLIDING THE RETAINING CLIP (C) ONTO THE OUTSIDE END OF THE SPINDLE UNTIL SNUGLY SEATED AGAINST THE LATCH.



STEP 5)
 SLIDE THE BACKPLATES ONTO THE SPINDLE, ORIENTED SO THAT THE PRIVACY HOLES (A) ARE CLOSEST TO THE DOOR EDGE. BE SURE THAT THE INSIDE PLATE (B) IS ON THE INSIDE OF THE DOOR. FASTEN THE BACKPLATES TOGETHER USING THE PROVIDED SCREWS (C).

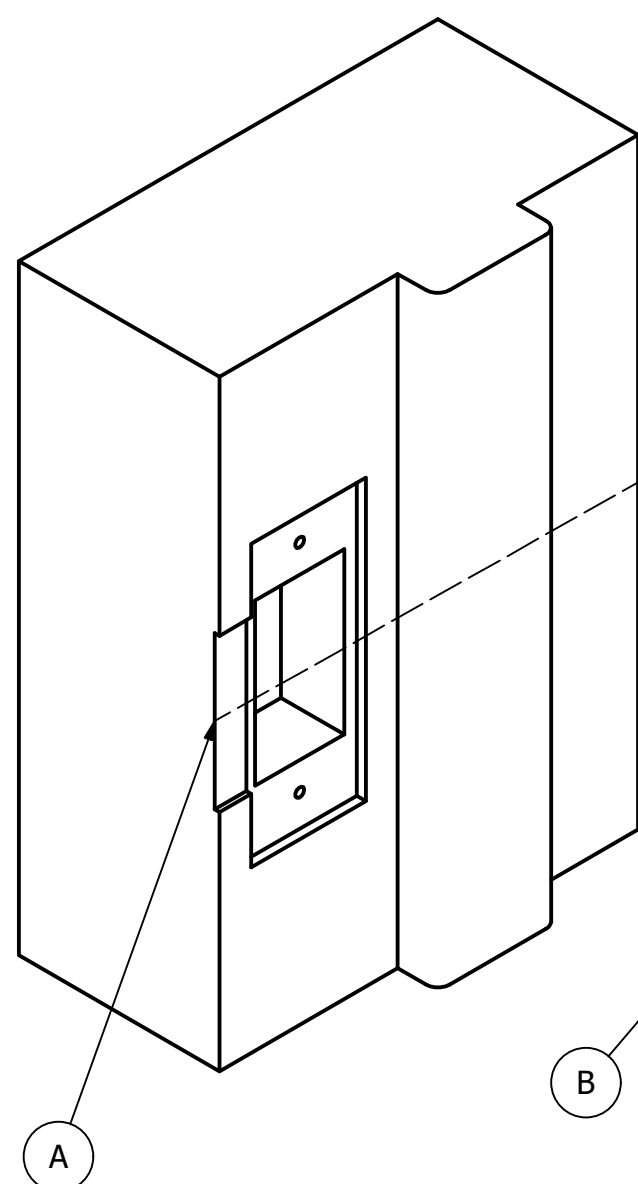


STEP 6)
 SLIDE THE LEVER AND ROSE TRIM SETS ONTO THE BACKPLATES FLUSH AGAINST THE DOOR. ALIGN THE PRIVACY HOLES (A) WITH THE PRIVACY MECHANISM (B) ON THE LATCH. USE THE HEX WRENCH (C) TO FASTEN THE SET SCREWS (D) INTO THE SET SCREW HOLES ON THE LEVERS.

STEP 7)
 OBSERVE THE LEVERS TO DETERMINE IF LEVEL. IF NOT, REMOVE THE LEVER AND ROSE, LOOSEN THE BACKPLATE SCREWS, THEN ROTATE THE BACKPLATES AS NEEDED BEFORE REASSEMBLING.

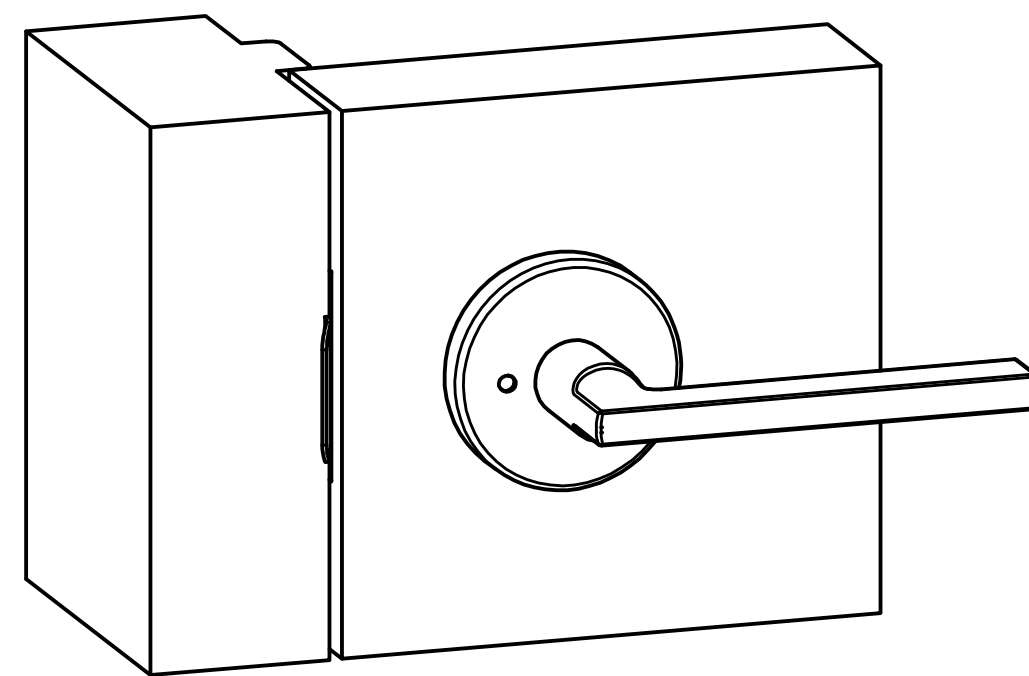
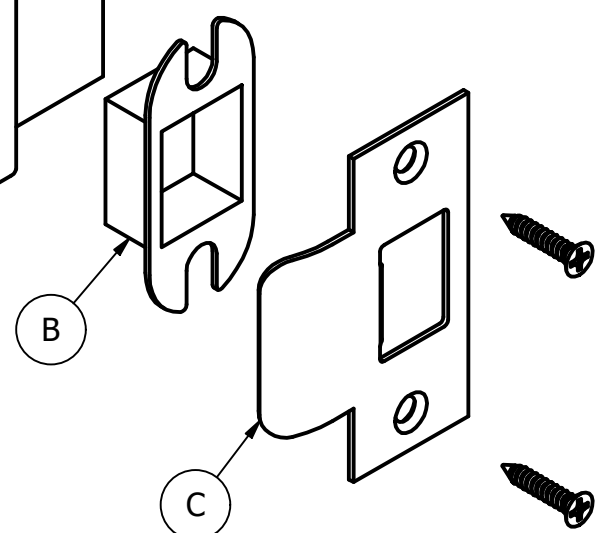
STEP 8)
 INSERT THE PRIVACY PIN (E) INTO THE PRIVACY HOLE (A) ON THE INSIDE OF THE DOOR AND THREAD INTO THE PRIVACY MECHANISM (B) OF THE LATCH.

IN CASE OF AN EMERGENCY THE HEX WRENCH CAN BE USED TO UNLOCK THE DOOR BY INSERTING IT INTO THE PRIVACY HOLE ON THE OUTSIDE ROSE.



STEP 9)
 PREPARE THE DOOR FRAME ACCORDING TO THE STRIKE TEMPLATE, USING THE SAME HORIZONTAL CENTER LINE (A) AS THE LATCH.

STEP 10)
 INSERT THE DUST BOX (B) AND STRIKE PLATE (C) INTO THE DOOR FRAME AND FASTEN WITH THE PROVIDED SCREWS. MAKE ANY NEEDED ADJUSTMENTS TO THE DOOR FRAME.



STEP 11)
 VERIFY THAT THE LATCH BOLT PROPERLY ENGAGES THE STRIKE PLATE BY CLOSING THE DOOR. IF IT DOES NOT LATCH, MAKE THE NEEDED ADJUSTMENTS.