

NOTE:  
 1) FOR OPTIONAL TRIM FUNCTIONS USE: D540, D545, D620, D640, or D645.  
 2) FOR DOOR PREP USE DP-271 thru DP-274.

**D520 (SHOWN)  
 TURN KNOB X CYLINDER**

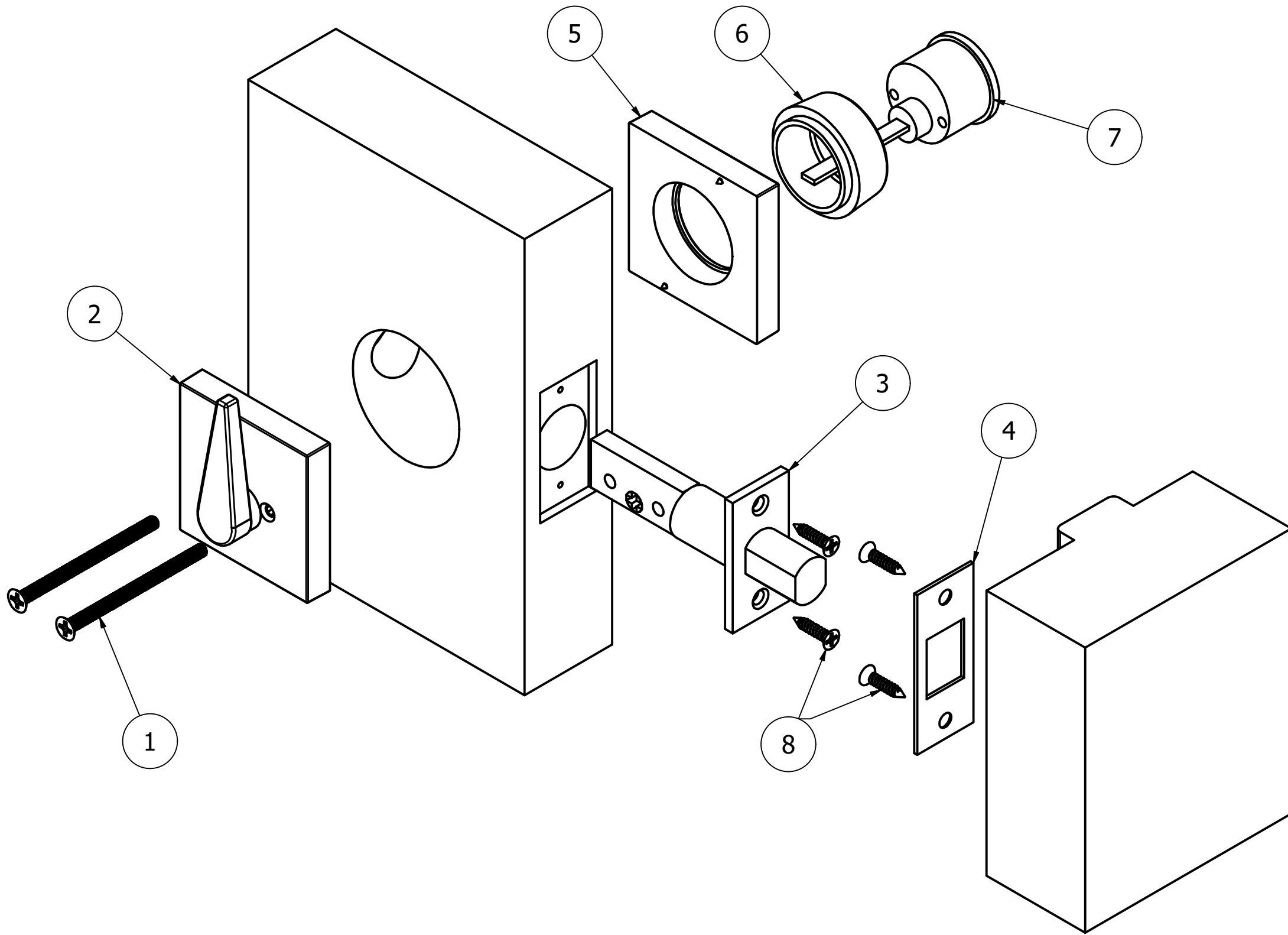


TABLE		
ITEM	QTY	DESCRIPTION
1	2	FASTENERS, INSIDE TRIM
2	1	TRIM, TURN KNOB SUB-ASSY, INSIDE
3	1	DEADBOLT LATCH STRIKE, DEADBOLT
4	1	TRIM, CYLINDER ROSE PLATE
5	1	CYLINDER RING
6	1	CYLINDER
7	1	FASTENERS, STRIKE & DEADBOLT
8	4	FASTENERS, STRIKE & DEADBOLT

Description:  
**D500, D600 SERIES DEADBOLT  
 INSTALLATION INSTRUCTIONS**

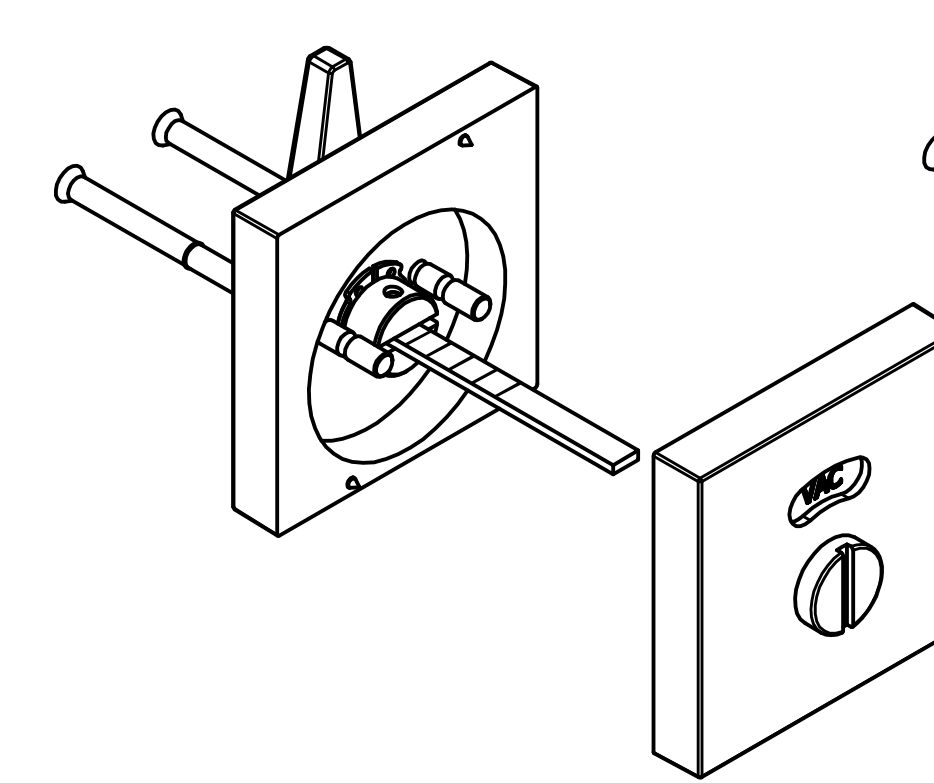
**FR International**  
 1011 3rd Avenue S.W. Carmel, IN. 46032

TOLERANCES UNLESS OTHERWISE SPECIFIED:  
 X.X (METRIC) = ±0.5  
 X.XX (METRIC) = ±0.15  
 0.00 (UNIFIED) = ±.015"  
 0.000 (UNIFIED) = ±.005"

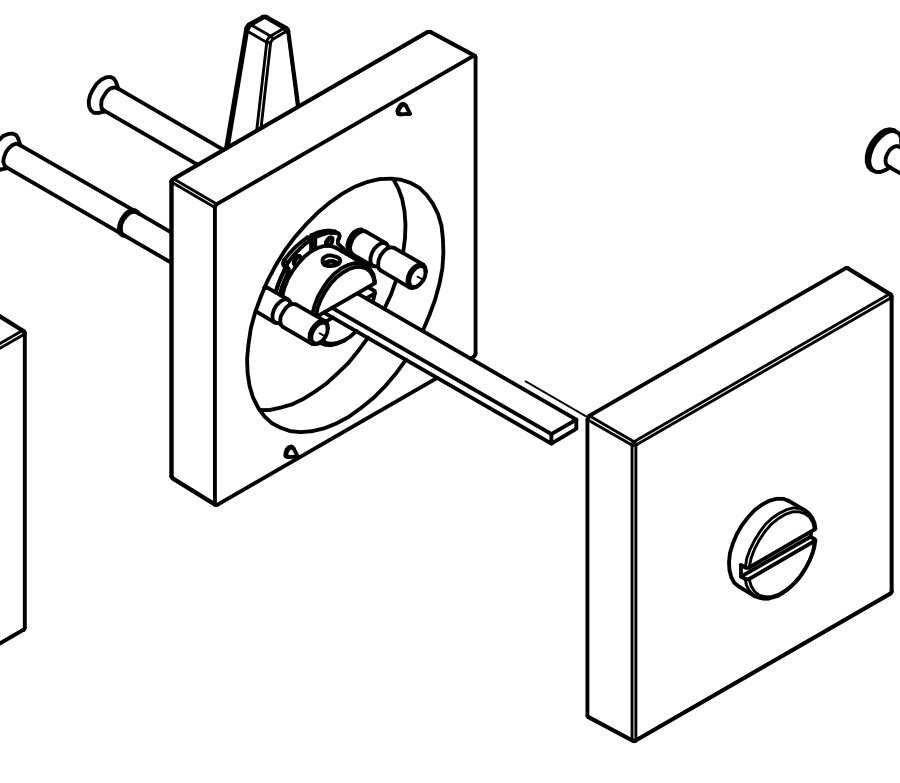
Drawing No: **IT-271**  
 Drawn By: **JWB**  
 Orig. Date: **07-07-21**  
 Rev. Date: **6-15-26 JWB** Rev.: **A**

**NOT TO SCALE**

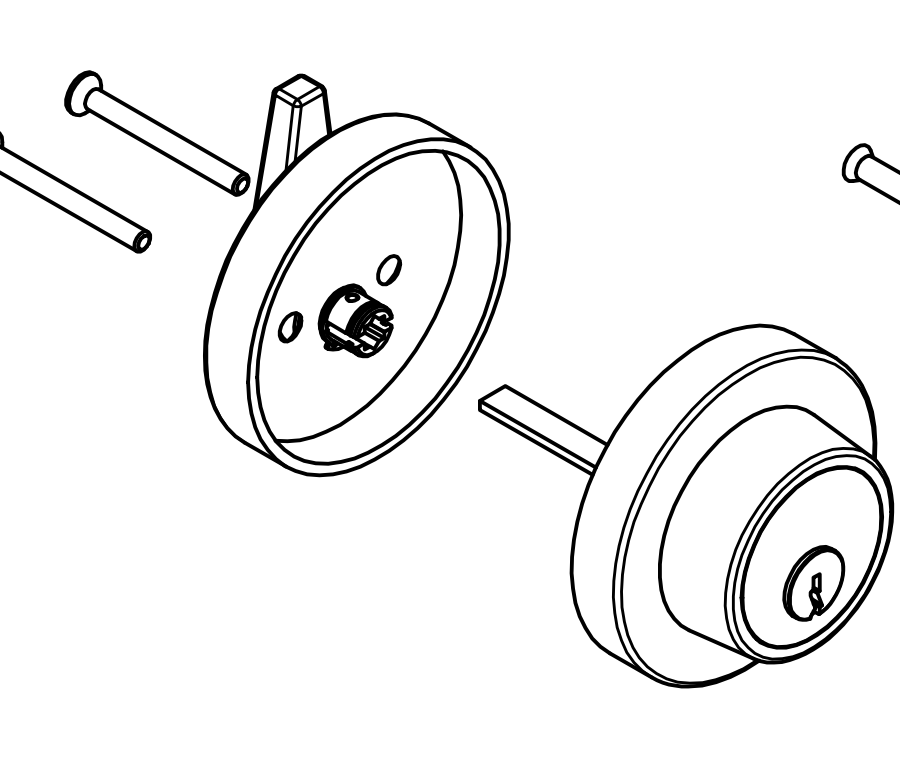
**OPTIONAL  
 D540  
 TURN KNOB X COIN RELEASE  
 INDICATOR**



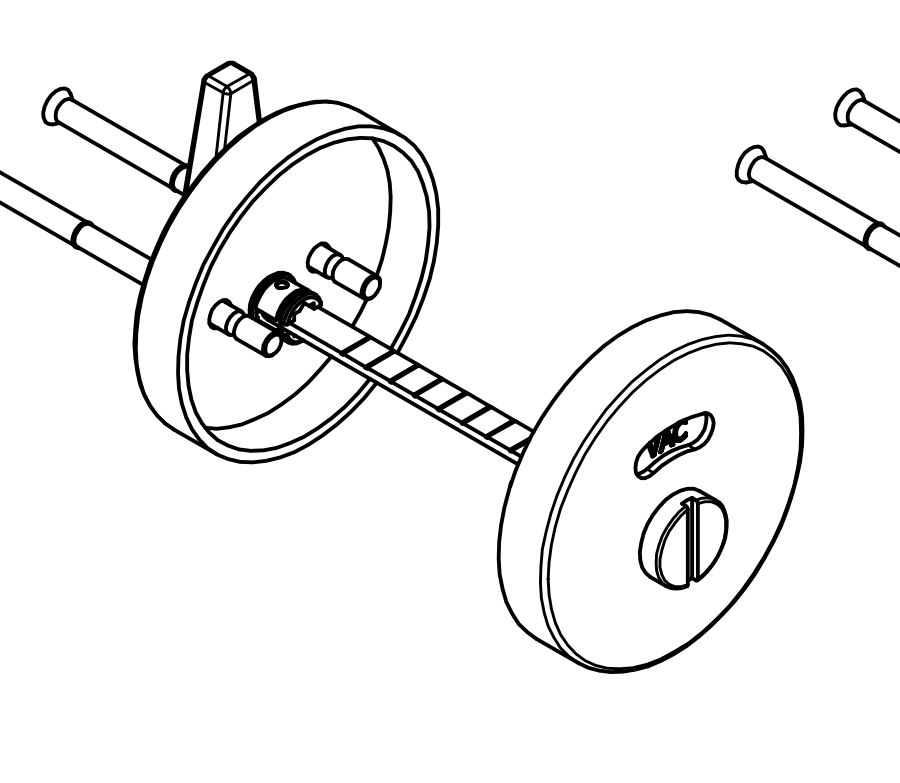
**OPTIONAL  
 D545  
 PRIVACY  
 TURN KNOB X COIN RELEASE**



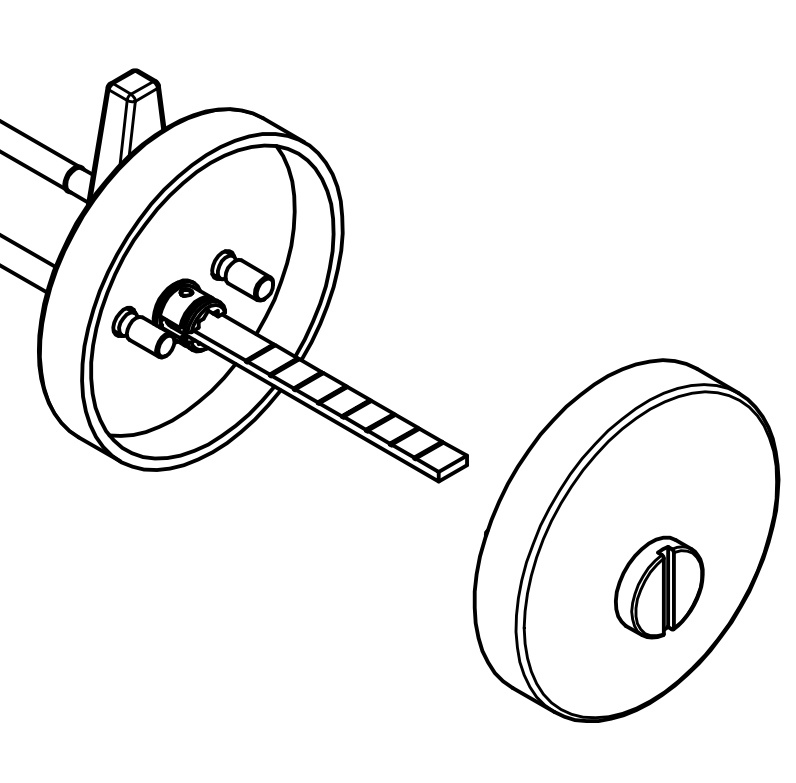
**OPTIONAL  
 D620  
 TURN KNOB X CYLINDER**



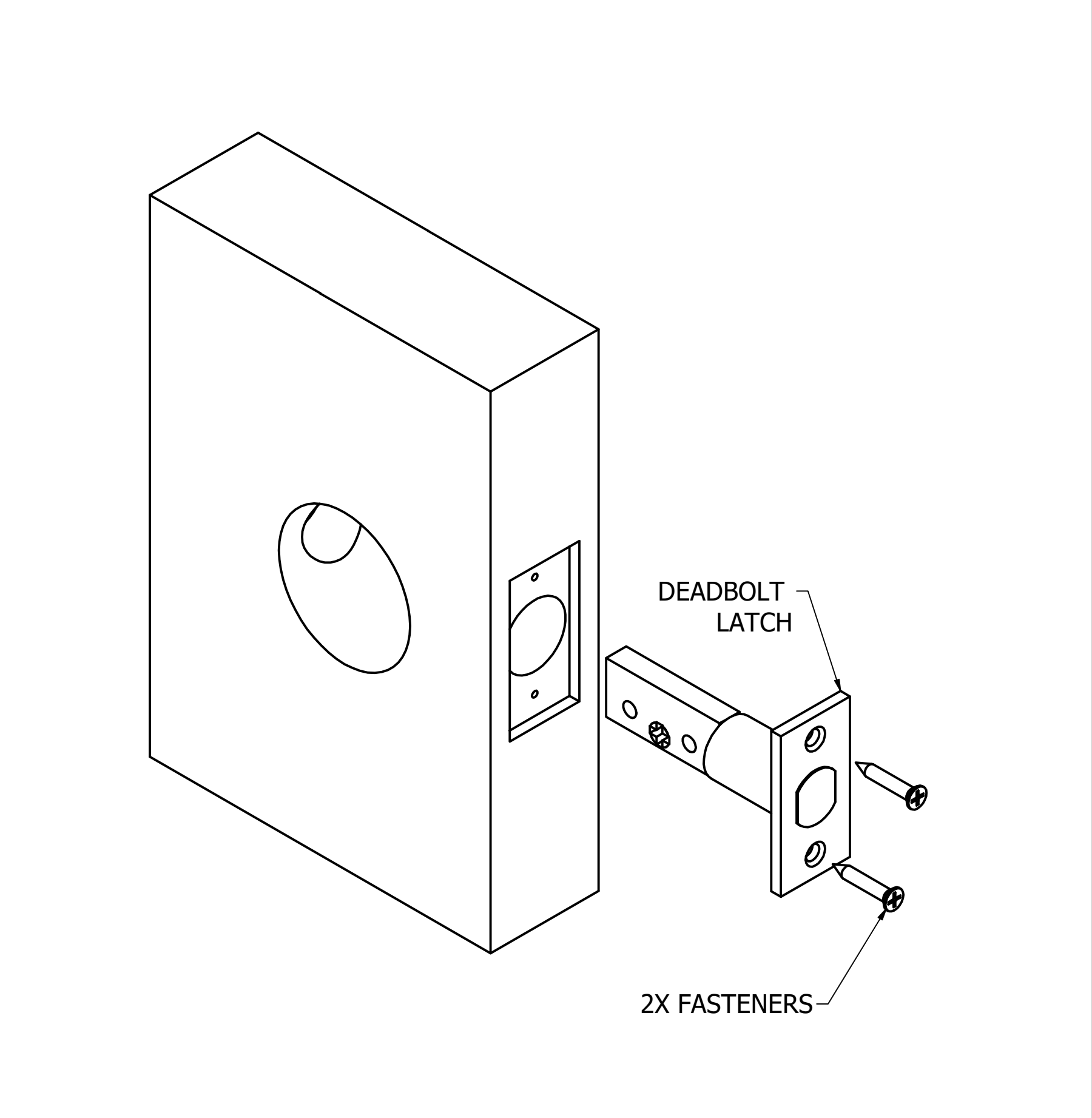
**OPTIONAL  
 D640  
 TURN KNOB X EMTI**



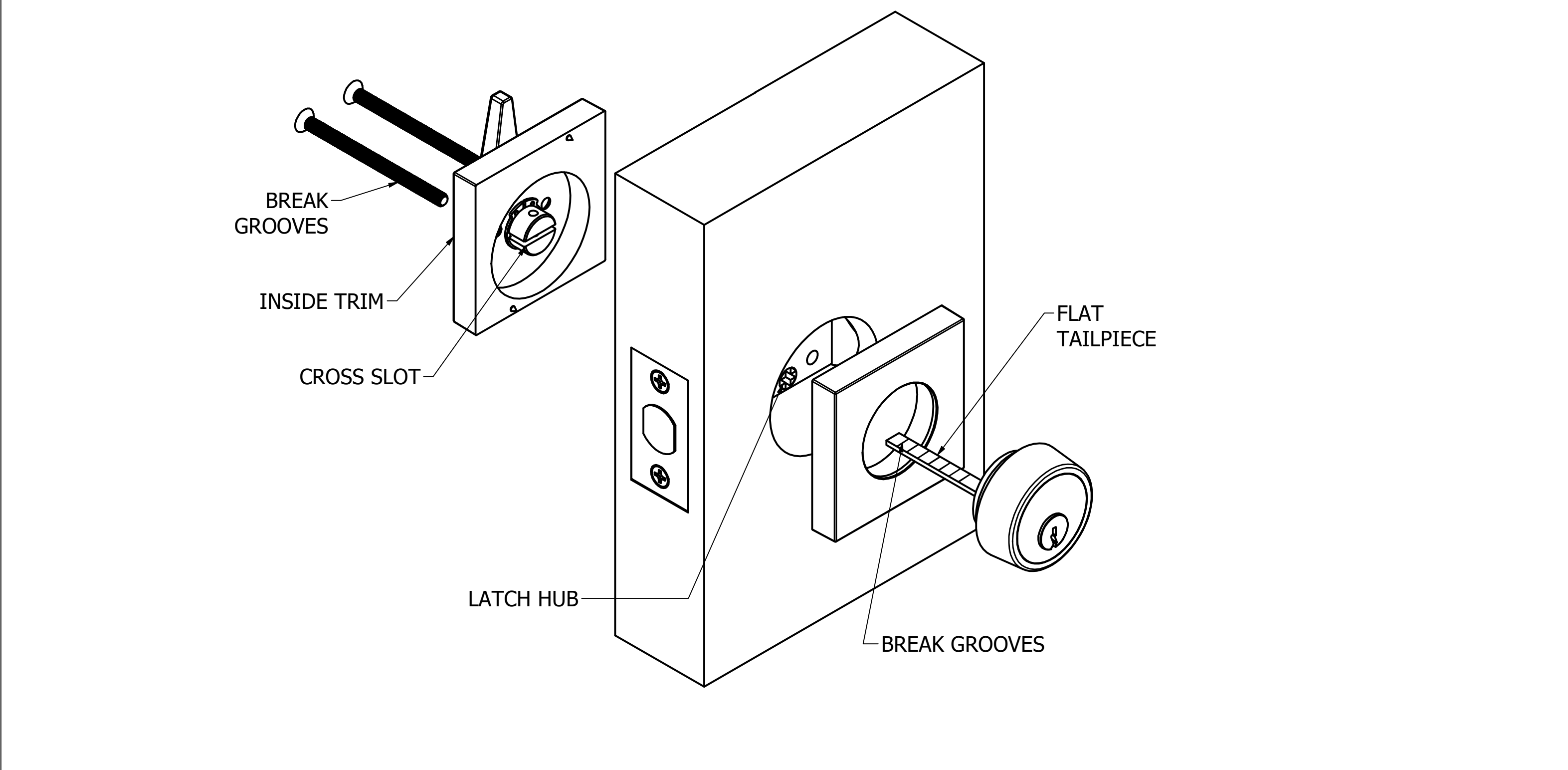
**OPTIONAL  
 D645  
 PRIVACY  
 TURN KNOB X COIN TURN**



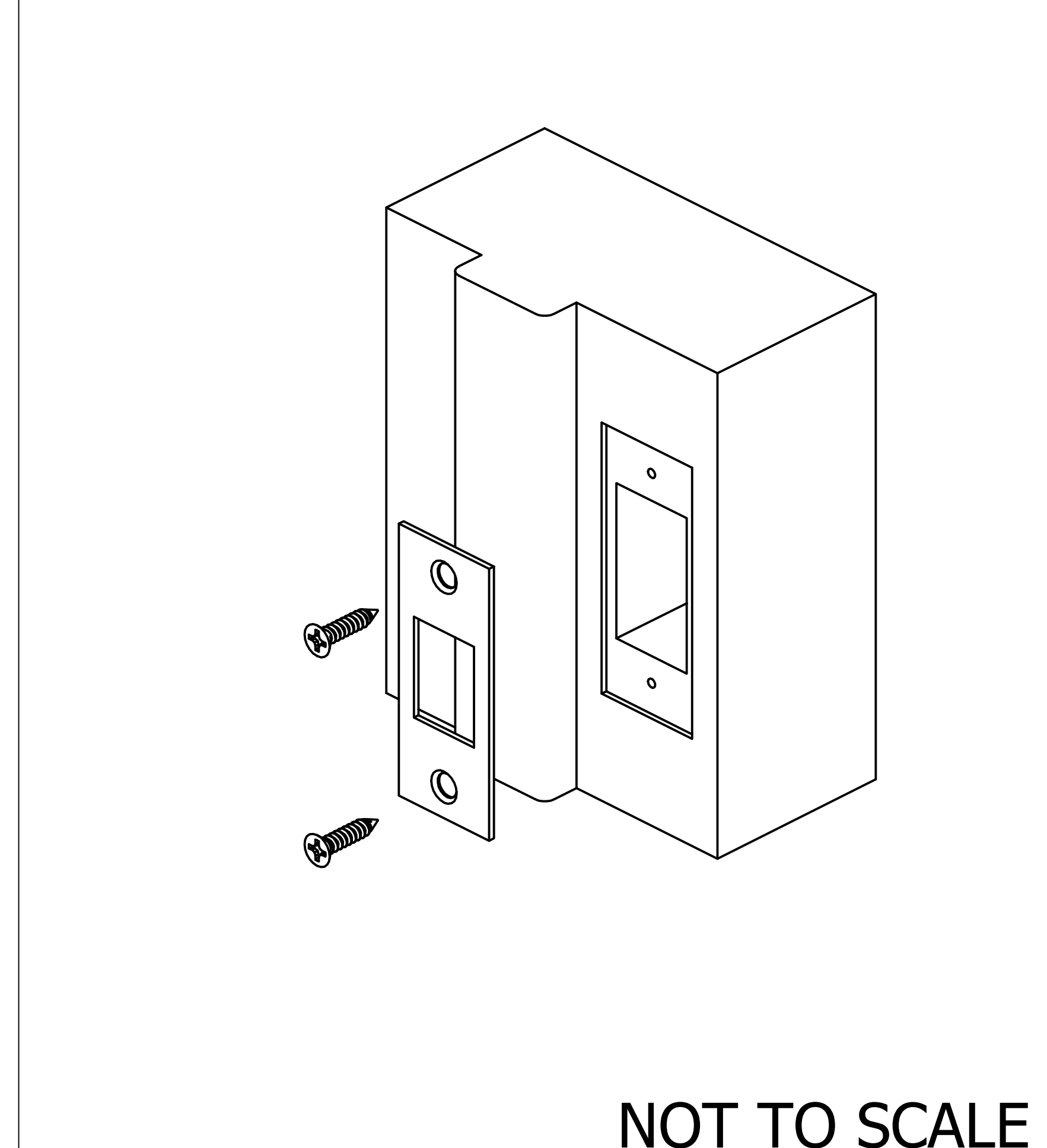
**STEP 1:**  
 A. WITH THE DEADBOLT IN THE RETRACTED POSITION, INSTALL THE DEADBOLT LATCH INTO THE DOOR EDGE PREP.  
 B. INSERT THE 2X FASTENERS TO SECURE DEADBOLT INTO THE DOOR.  
 C. PROCEED TO STEP 2.



**STEP 2:**  
 A. ALIGN THE FLAT TAILPIECE ON THE CYLINDER WITH THE LATCH HUB.  
 B. INSERT THE FLAT TAILPIECE INTO THE DEADBOLT HUB AND PRESS OUTSIDE CYLINDER ROSE TO DOOR SURFACE.  
 C. WHILE HOLDING THE CYLINDER IN PLACE, ALIGN THE INSIDE TURN KNOB MAKING SURE IT IS ORIENTED IN THE VERTICAL POSITION.  
 D. POSITION INSIDE TRIM AND ALIGN THE CROSS SLOT ON THE REVERSE SIDE OF THE TURN KNOB WITH THE FLAT TAILPIECE.  
 E. INSTALL THE (2) FASTENERS. TIGHTEN TO A FIRM CONDITION AND TEST THE TURN KNOB AND CYLINDER. IT MAY BE NECESSARY TO ADJUST THE LENGTH OF THE FASTENERS AND THE TAILPIECE DUE TO DOOR THICKNESS. THIS IS ACCOMPLISHED BY BREAKING THE FASTENERS AT THE "BREAK GROOVES" AND THE TAILPIECE AT THE "BREAK GROOVES". TAKE PRECAUTIONS AS TO NOT DAMAGE THE THREADS.  
 F. IF DEADBOLT IS BINDING IN OPERATION, LOOSEN TRIM AND RE-ADJUST TO PREVENT BINDING. RE-TIGHTEN FASTENERS AND TEST AGAIN. REPEAT IF NECESSARY.  
 G. PROCEED TO STEP 3.



**STEP 3:**  
 A. INSTALL THE STRIKE PLATE INTO THE DOOR FRAME STRIKE PREP.  
 B. ONCE INSTALLED, CHECK DEADBOLT FOR NORMAL OPERATION.



**NOT TO SCALE**