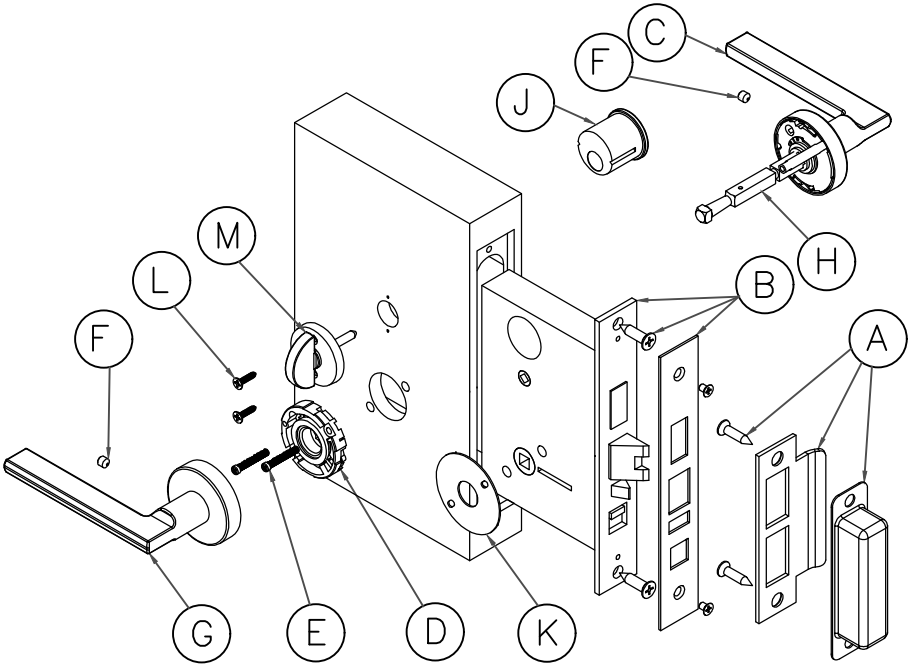
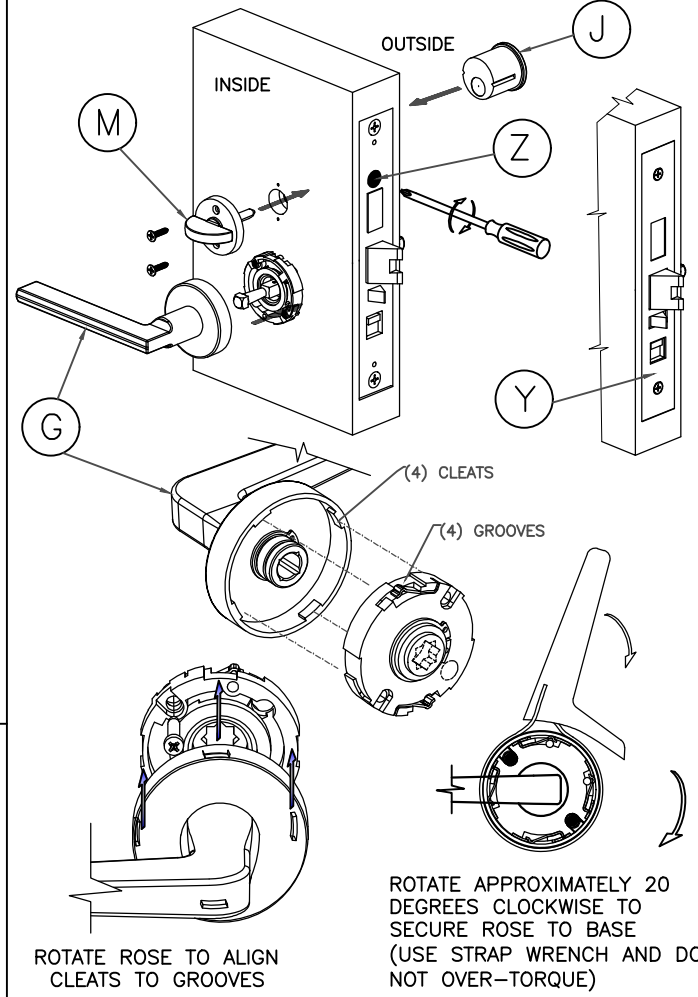


IT-129, INSTALLATION INSTRUCTIONS FOR SM SERIES SECTIONAL TRIM ON BEST 45H LOCK

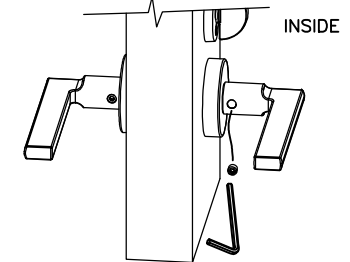


- A) Mortise Strike kit components
- B) Mortise lock/Faceplate
- C) Outside Sectional Trim Sub-Assy.
- D) 1919 Backplate, Inside
- E) Mounting screws (2)
- F) Set Screws, Lever (2)
- G) Inside Trimplate Sub-Assy.
- H) Spindle (1 loose pc)
- I) Hex Wrench (not shown)
- J) Cylinder
- K) Firedoor Guard (1)
- L) Screws, Turn Knob (2)
- M) Turn Knob Assy.

- STEP 3)
- a. INSTALL THE TURN KNOB "M" WITH FASTENERS PROVIDED.
 - b. INSTALL THE CYLINDER "J" TO THE CORRECT POSITION AND TIGHTEN THE CYLINDER SET SCREW "Z". CHECK LOCK FOR PROPER OPERATION.
 - c. INSTALL THE FACEPLATE "Y".
 - d. INSTALL THE INSIDE TRIM "G" BY ALIGNING THE SQUARE SPINDLE INTO THE SQUARE LEVER HOLE, THEN PUSHING TO THE SURFACE OF DOOR ROTATING THE ROSE TO ALIGN THE 4 CLEATS.
 - e. USING THE PROVIDED STRAP WRENCH, ROTATE THE ROSE APPROXIMATELY 20 DEGREES TO SECURE CORRECTLY.

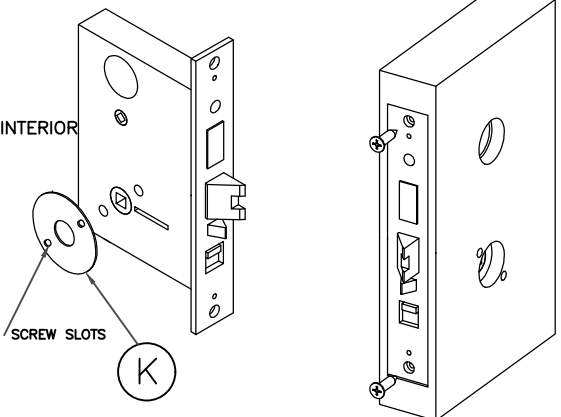


- STEP 4)
- a. INSERT THE LEVER SET SCREW "F" IN THE INSIDE LEVER ONLY.
 - b. CHECK LOCKSET OPERATION. LOCKSET AND TRIM SHOULD WORK IN A NORMAL OPERATING MOTION.



BEFORE ASSEMBLING, CAREFULLY READ THE INSTALLATION INSTRUCTIONS.

- STEP 1)
- a. PREPARE THE DOOR USING DP-129 DOOR PREP GUIDE.
 - b. APPLY THE FIRE DOOR GUARD "K" TO INTERIOR SIDE OF LOCK CASE. ATTACH THE FIREDOOR GUARD BY ALIGNING THE SCREW SLOTS WITH THE THRU HOLES IN THE LOCK CASE. REMOVE THE TAPE TO EXPOSE THE ADHESIVE AND "CAREFULLY" ALIGN AND ADHERE TO INSIDE SIDE OF THE LOCK CASE.
 - c. INSERT LOCKCASE INTO DOOR CAVITY AND SECURE WITH FASTENERS.



- STEP 2)
- a. THREAD INSIDE SPINDLE SECTION "H" ONTO THE "OUTSIDE" TRIM FIXED SPINDLE. THREAD DOWN ALL THE WAY UNTIL THE SPINDLE STOPS. UNSCREW THE INSIDE SPINDLE ONE FULL TURN TO ALLOW THE SPINDLES TO TURN FREELY.
 - b. ALIGN AND INSERT THE OUTSIDE TRIM ASSEMBLY "C" THROUGH THE MORTISE LEVER HUB WHILE ALSO ALIGNING THE MOUNTING POSTS THROUGH THE MOUNTING POST HOLES IN THE DOOR/LOCKCASE.
 - c. INSERT THE INSIDE 1919 BACKPLATE "D" OVER THE INSIDE SPINDLE, THEN INSERT (2) MOUNTING SCREWS "E". THREAD SCREWS IN FIRMLY BUT DO NOT OVER TORQUE SCREWS AS THIS COMPRESSES THE DOOR AND MAY CAUSE OPERATIONAL RESTRICTIONS.

