

- Note: Specify the correct holes to drill according to lock function.
- 1) Determine what Mortise Lock is to be installed, M500.
  - 2) Match the Mortise Lock with the Mortise function.
  - 3) Refer to the hole chart below for "holes to be drilled". DO NOT DRILL HOLES "F" IF SECTIONAL TRIM IS BEING INSTALLED.
  - 4) For specific door prep guides, refer to:
    - M500
    - DP-202 Sectional Trim (SM, SMT, SMG, SMCT, SME, SMQ, SMQR, SMQC, SMO, SMQE)
    - DP-202 Full Plate: 11010, 12010, 17010, 18010, 18020
    - DP-307 PRIVACY

Description:  
M500 FUNCTION HOLE CHART



TOLERANCES UNLESS OTHERWISE SPECIFIED:  
X.X (METRIC) = ±0.5  
X.XX (METRIC) = ±0.15  
0.00" (UNIFIED) = ±.015"  
0.000" (UNIFIED) = ±.005"

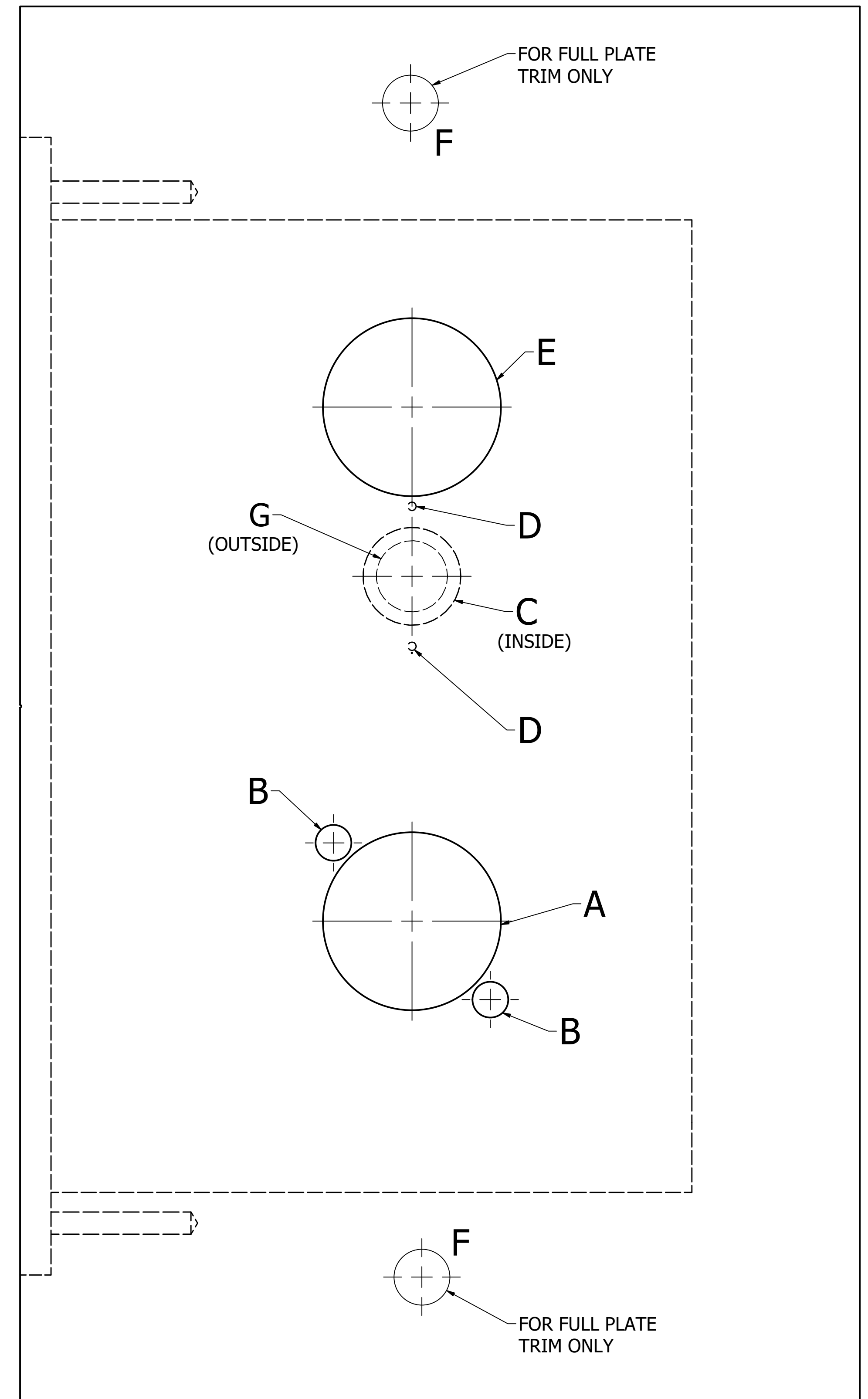
Drawing No:  
**DP-328**

Drawn By: **JWB**

Orig.Date: **05-09-18**

Rev. Date: **09-16-24** Rev.: **G**

		M500 FUNCTIONS CHART																											
		M504 M505 M507		M509 M514 M555 M557 M571 M587EU		M513 M515 M520 M521 M556		M519 M522 M523 M526		M501 M525		M518		M517		M516		M507EU M507EL		M513EU		M573		M529		M530		M527	
Holes to Drill		I/S	O/S	I/S	O/S	I/S	O/S	I/S	O/S	I/S	O/S	I/S	O/S	I/S	O/S	I/S	O/S	I/S	O/S	I/S	O/S	I/S	O/S	I/S	O/S	I/S	O/S	I/S	O/S
A	Lever Clearance Hole *, **	Through door		Through door		Through door		Through door		Through door								Through door		Through door		THIS SIDE ONLY ****						Through door	
B	M500 Trim Mounting (2 Holes) *, **	Through door		Through door		Through door		Through door		Through door								Through door		Through door		THIS SIDE ONLY ****						Through door	
C	Thumb Turn					●		●						●						●		THIS SIDE ONLY ****		●		●		●	
D	Thumb Turn Mtg. Screw Holes (2 Holes)					●		●						●						●		THIS SIDE ONLY ****		●		●		●	
E	Cylinder Hole		●	●	●		●					●		●	●	●		●		●				●				●	
F	Trim Plate Mtg. Holes ***	●	●	●	●	●	●	●	●			●	●				●	●	●	●							●	●	
G	EMERGENCY ACCESS HOLE							●																		●		●	



\* Select trim holes according to the Mortise Lock case type, M500.  
 \*\*These holes are through holes--it is recommended to drill these holes from both sides of the door to reduce the drill wander which can potentially cause an inaccurate door prep.  
 \*\*\*If full plate trim is being installed, drill holes:  
 1. A, B, where a 1919 Backplate is being used.  
 2. For turn knob function, drill hole C.  
 \*\*\*\*THIS SIDE ONLY = DEPTH IS TO CENTER OF DOOR THICKNESS--NOT A THROUGH HOLE.