

NOTES:

- 1) NOT TO SCALE. DO NOT USE AS A DOOR TEMPLATE.
- 2) REFER TO DP-156 FOR STRIKE PREPARATION GUIDE.
- 3) SLIGHT MODIFICATION MAY BE NECESSARY FOR PROPER FIT.
- 4) SHOWN, RIGHT HAND DOOR PREP.

Description:

M573 COMM-PASS MORTISE, SM TRIM
 FOR COMMUNICATING LOCK WITH DEADBOLT, WITH
 TRIM INSIDE ONLY (RIGHT HAND SHOWN)

TOLERANCES UNLESS OTHERWISE SPECIFIED:
 X.X (METRIC)= ±0.5
 X.XX(METRIC)= ±0.15
 0.00"(UNIFIED)= ±.015"
 0.000"(UNIFIED)= ±.005"

Drawing No:

DP-309

Drawn By:

JWB

Orig.Date

08-02-18

Rev. Date:

6-4-26 JWB

Rev.:

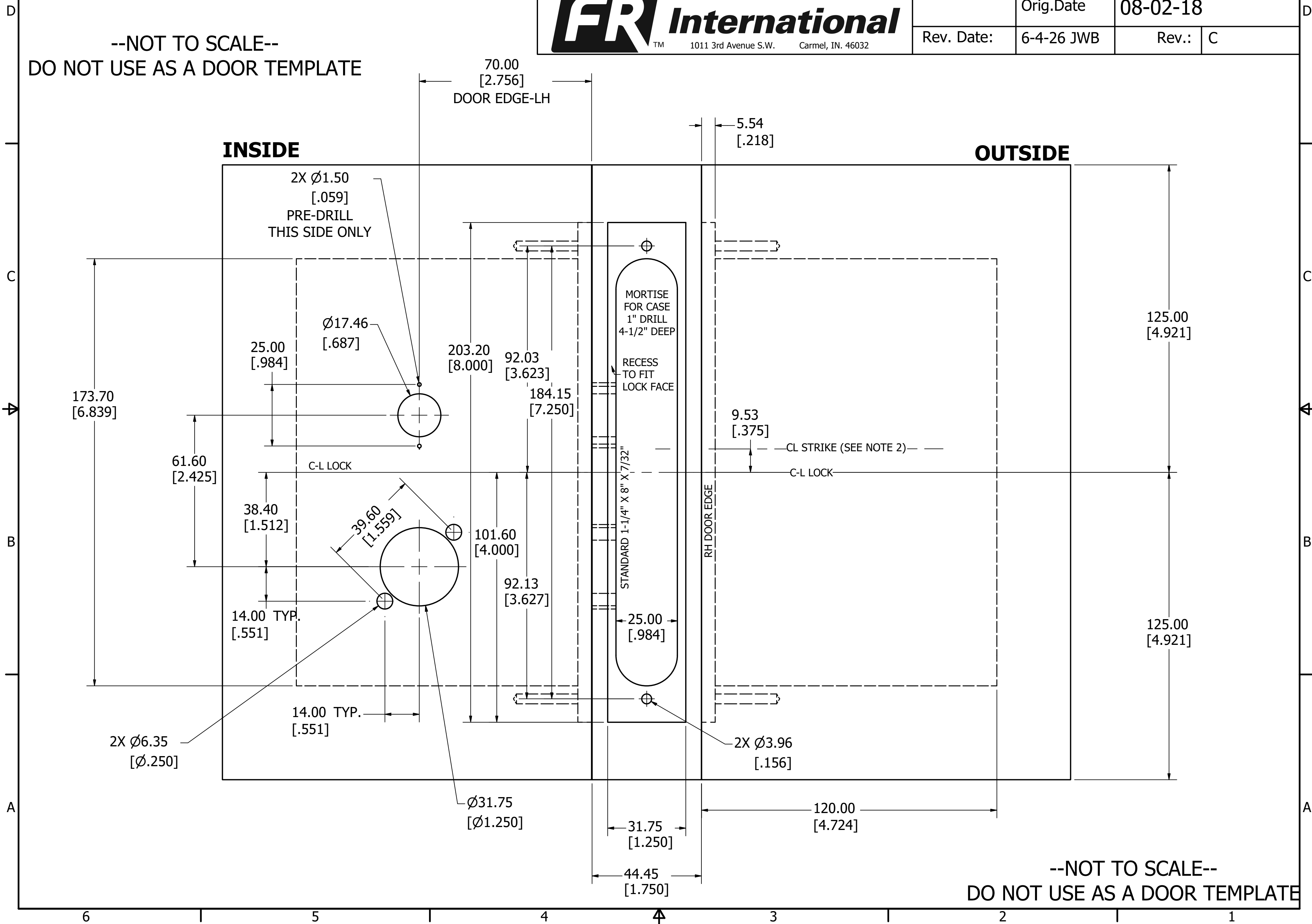
C



--NOT TO SCALE--
DO NOT USE AS A DOOR TEMPLATE

OUTSIDE

INSIDE



--NOT TO SCALE--
DO NOT USE AS A DOOR TEMPLATE