

- NOTES: A
- DOOR PREPARATION**
- 1) FUNCTION: D500 SERIES DEADBOLT (D520, D540, D560).
 - 2) FOR RIGHT HAND OPERATION, MIRROR DIMENSIONS TO OTHER SIDE OF JAMB.
 - 3) REFER TO THE CHART FOR CORRECT BACKSET AND FACEPLATE DIMENSIONS.
- STRIKE PREPARATION**
- 4) STRIKE CENTERLINE LOCATED AT CENTERLINE OF TUBULAR DEADBOLT TO ENSURE PROPER FUNCTIONING OF DEADBOLT.
 - 5) DIMENSIONS "X" AND "Y" ARE VARIABLE DEPENDING ON DOOR THICKNESS.
 - 6) STRIKE LOCATION ON FRAMES MUST BE ADJUSTED FOR THICKNESS OF DOOR SILENCERS WHEN USED.

NOT TO SCALE

Description: D600 SERIES TUBULAR DEADBOLT PREP
60mm OR 70mm BACKSET, 1" OR 1-1/8" FACEPLATE

TOLERANCES UNLESS OTHERWISE SPECIFIED:
X.X (METRIC) = ±0.5
X.XX (METRIC) = ±0.15
0.00" (UNIFIED) = ±.015"
0.000" (UNIFIED) = ±.005"

Drawing No: DP-271 THRU DP-274

Drawn By: JWJ

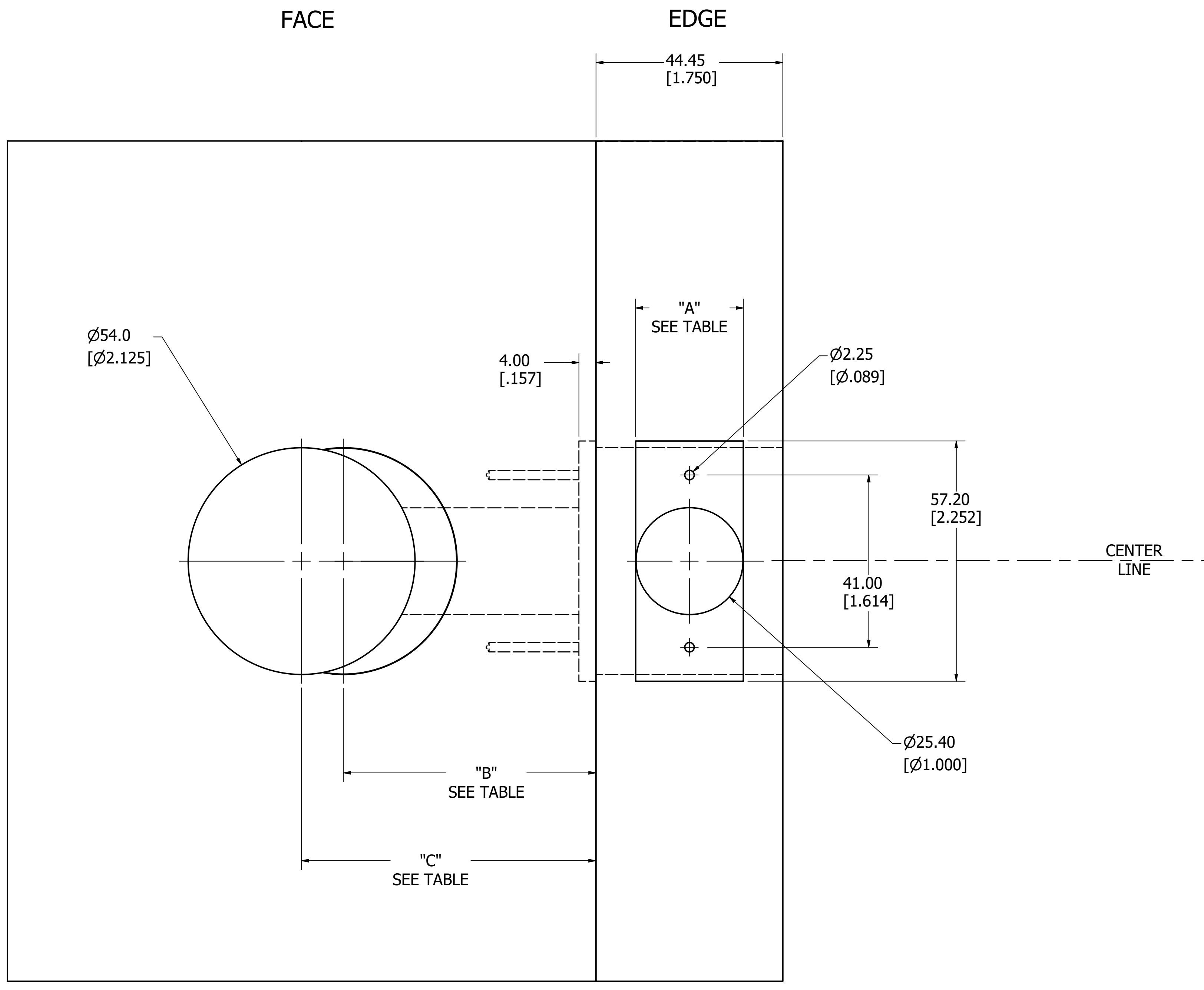
Orig. Date: 06-16-21

Rev. Date: 07-13-21 Rev.: A

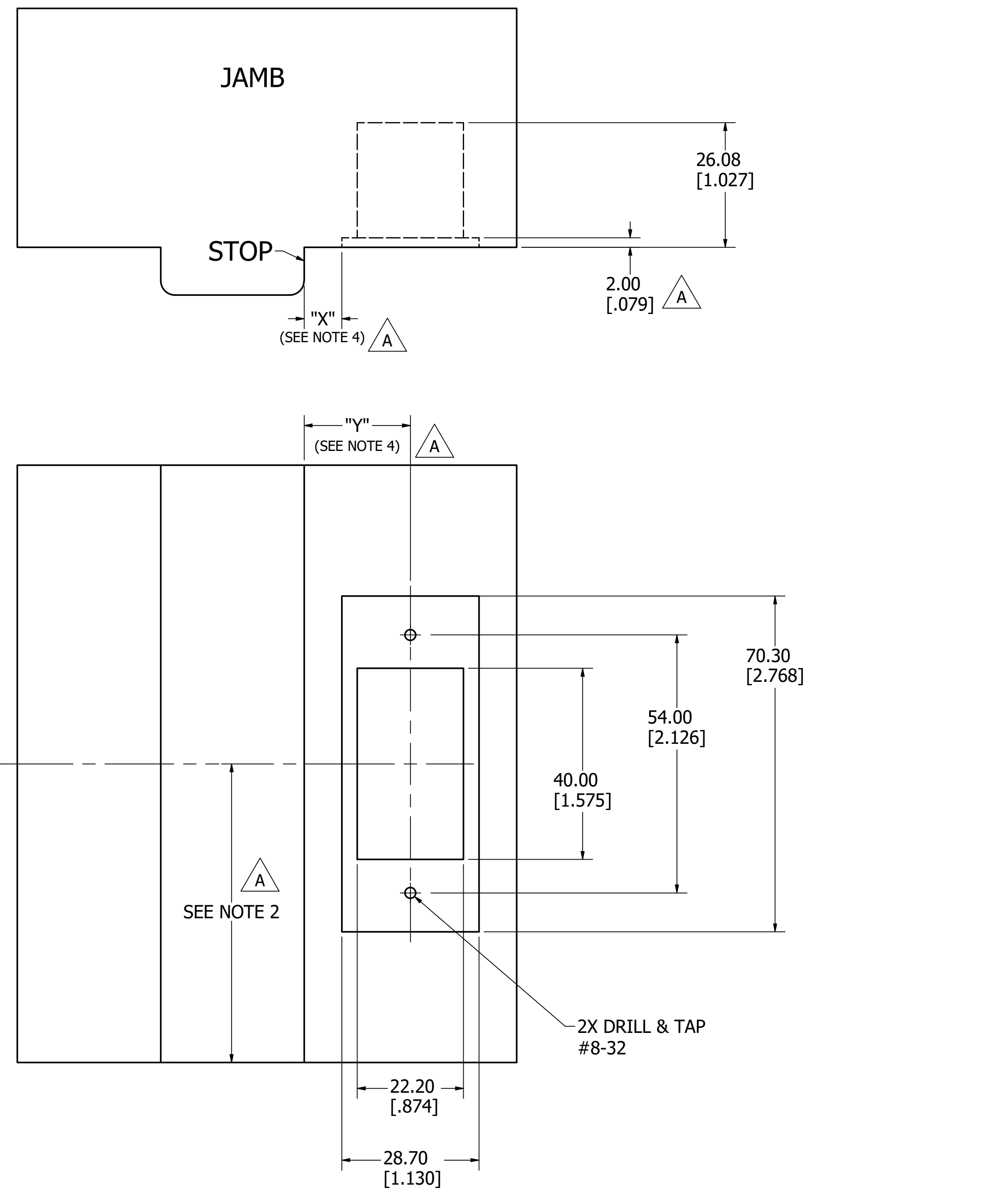


ITEM	DOOR PREP #	DIM "A"	DIM "B"	DIM "C"	DESCRIPTION
1	DP-271	1"	60mm(2-3/8")		DEADBOLT FACEPLATE WIDTH AND BACKSET
2	DP-272	1-1/8"	60mm(2-3/8")		DEADBOLT FACEPLATE WIDTH AND BACKSET
3	DP-273	1"		70mm(2-3/4")	DEADBOLT FACEPLATE WIDTH AND BACKSET
4	DP-274	1-1/8"		70mm(2-3/4")	DEADBOLT FACEPLATE WIDTH AND BACKSET

DOOR PREPARATION



STRIKE PREPARATION



NOT TO SCALE