

- NOTES:
- 1) NOT TO SCALE. DO NOT USE AS A DOOR TEMPLATE.
 - 2) REFER TO DP-156 FOR STRIKE PREPARATION GUIDE.
 - 3) SLIGHT MODIFICATION TO THE DOOR PREP MAY BE NECESSARY FOR PROPER FIT.
 - 4) SHOWN, RIGHT HAND DOOR PREP.
 - 5) SPECIFIC CTC DIMENSIONS (mm) FOR ESCUTCHEON PLATES ONLY:
 (NOTE: HOLE "D" NOT NECESSARY ON ALL ESCUTCHEON PLATES)
 (NOTE: HOLE "B" NOT NECESSARY ON 12010, 18010 PLATES)
 - 6) REFER TO DP-328 FOR HOLE REQUIREMENTS.
 - 7) FOR ALL ESCUTCHEON PLATES AND SMALL FORMAT SECTIONAL TRIM OPTIONS: SM, SMT, SMG, SMCT, SME, SMQ, SMQR, SMQC, SMO, SMQE.
 - 8) DRILL 19mm (3/4") HOLE TO PROVIDE ACCESS FOR POWER SOURCE.

	DIM "A"	DIM "B"
11010 PLATE:	203.30	65.43
12010 PLATE:	203.30	64.45 (HOLE "B" NOT NECESSARY)
17010 PLATE:	203.30	50.85
18010 PLATE:	215.70	70.05 (HOLE "B" NOT NECESSARY)
18020 PLATE:	215.70	70.05

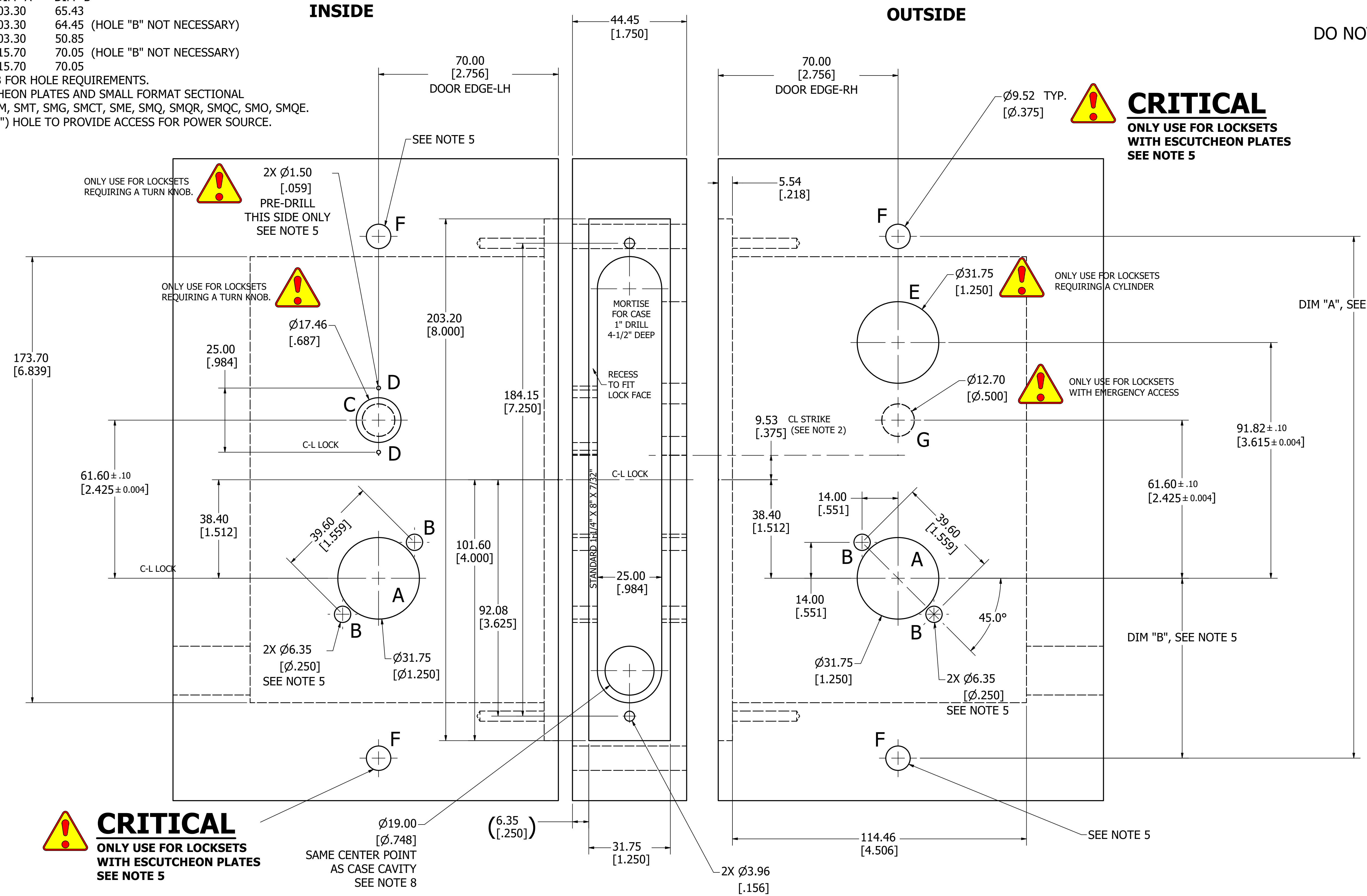
--NOT TO SCALE--
DO NOT USE AS A DOOR TEMPLATE

Description:
M500E MORTISE ELECTRIFIED DOOR PREP,
SM ROSES OR ESCUTCHEONS, 1919 BACKPLATE
SPRING SYSTEM (RIGHT HAND SHOWN)



Drawing No: DP-204	
Drawn By: JWB	Orig. Date 08-05-14
Rev. Date: 06-25-25JWB	Rev.: B

--NOT TO SCALE--
DO NOT USE AS A DOOR TEMPLATE



CRITICAL
ONLY USE FOR LOCKSETS
WITH ESCUTCHEON PLATES
SEE NOTE 5

Ø19.00 [Ø.748]
SAME CENTER POINT
AS CASE CAVITY
SEE NOTE 8

CRITICAL
ONLY USE FOR LOCKSETS
WITH ESCUTCHEON PLATES
SEE NOTE 5