

- NOTES:
- 1) MATERIAL: WOOD DOOR OR AS SPECIFIED.
  - 2) ALL HOLES TO BE DRILLED FROM EACH SIDE AND THEN HALF WAY THRU. THIS WILL HELP PREVENT DRILL WONDER SO HOLES ARE CO-LINEAR.
  - 3) ALL EDGE BORE/MORTISING PREPARATIONS, REFER TO VING TEMPLATE:
    - a. AN-231 FOR WOOD DOORS.
    - b. D000550046-202 FOR METAL DOORS.
    - c. AN-228\_AN-236, D000550046-009 FOR THICK DOORS.
  - 4) THIS TEMPLATE IS NOT 1:1 SCALE. DO NOT USE AS A 1:1 DOOR PREP TEMPLATE.
  - 5) RIGHT HAND PREP SHOWN. FOR LEFT HAND PREP, REVERSE SIDES.

NOT TO SCALE

Description:  
FRASCIO SM TRIM FOR VING ESSENCE  
SERIES, ANSI "DA" MOUNTING



TOLERANCES UNLESS OTHERWISE SPECIFIED:  
X.X (METRIC)= ±0.5  
X.XX (METRIC)= ±0.15  
0.00" (UNIFIED)= ±.015"  
0.000" (UNIFIED)= ±.005"

Drawing No:  
**DP-192**

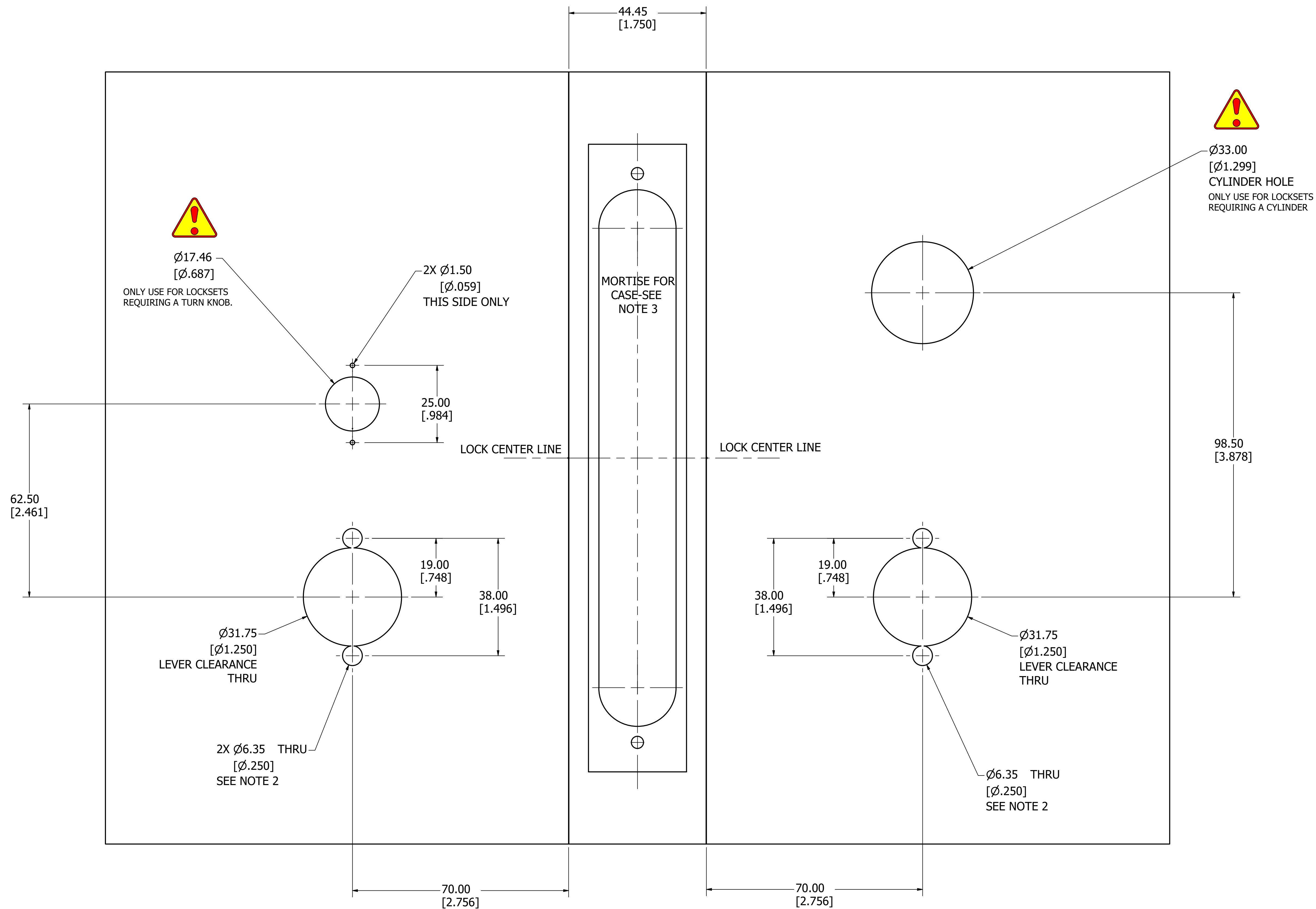
Drawn By: **JWB**

Orig.Date: **03-31-14**

Rev. Date: **01-20-23**

Rev.: **A**

NOT TO SCALE



NOT TO SCALE