

Frascio®

# Condensed Product Guide



*A valued brand of*

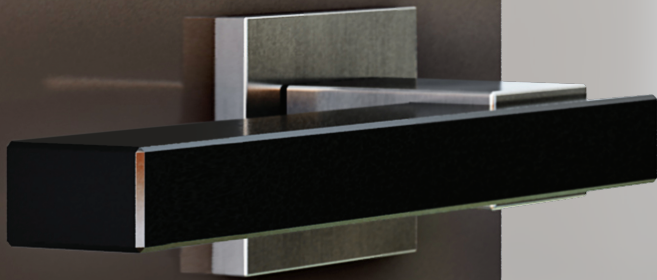
**FR** International

[www.FRInternational.com](http://www.FRInternational.com)

# Open a world of lever design possibilities

Frascio is a valued brand of FR International, a leading manufacturer and supplier of some of the world's finest decorative door hardware.

Because FR International manufactures original door hardware, we offer custom manufacturing to meet special needs in modifications, door trim and adaptations to existing door/frame conditions.



## Contents

- 3 About Us
- 4 Lever Designs
- 5 Lever Designs
- 6 Lever Designs
- 7 M500 Mortise Lock
- 8 Rose, Plate, Turnknob, Indicator Options
- 9 T600 Tubular Latchset
- 10 T700 Tubular Latchset
- 11 Auxiliary Locks, Accessories
- 12 Architectural, Decorative, Ornate Pulls
- 13 Locking Pulls
- 14 Sliding Door Locks and Trim
- 15 Custom Solutions

Finish Code (Reference BHMA)	Finish Description
605	Polished Brass
606	Satin Brass
606M	Satin Brass – Matte
609	Antique Brass
609M	Antique Brass – Matte
613	Dark Bronze
618	Polished Nickel
619	Satin Nickel
620	Antique Nickel
620M	Antique Nickel – Matte
622	Matte Black Powder Coat
625	Polished Chrome
626	Satin Chrome
629	Polished Stainless Steel
630	Satin Stainless Steel
695	Dark Bronze Powder Coat
IXATC	Anthracite PVD Charcoal
IXABP	Absolute Black Polished PVD
IXB	InoxBrass PVD Polished Brass
IXBB	Brushed Bronze PVD
IXBLK	Black PVD
IXBSB	Brushed Satin Black PVD
IXC	InoxChrome PVD Stainless
IXCPN	Champagne PVD
IXPCPN	Polished Champagne PVD
IXS	Satin Brass PVD
IXSLN	Satin London Night PVD
IXSRC	Satin Red Copper PVD
BBN	Brushed Blackened Nickel
BREZO	Brezo Bronze

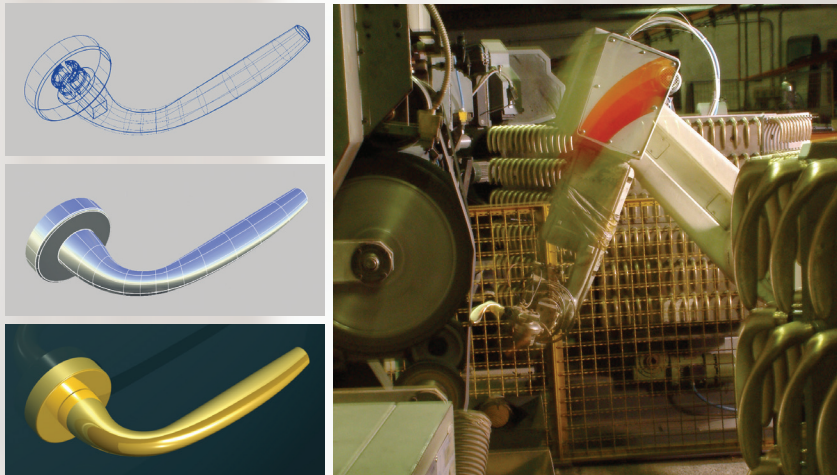
Scan here to learn more about Our Finishes.



# About Us

From our earliest beginnings in 1945 as a workshop in northern Italy, Frascio has grown to become a globally recognized decorative door hardware brand specified by premier architects and designers worldwide.

We remain true to our original manufacturing philosophy: to use only the highest quality materials, to continuously research emerging designs and technology, and to uphold careful attention to production detail.



We utilize the latest CAD engineering tools to create designs and ensure reliable system operation. And, for those projects that require additional shapes and configurations, we are pleased to offer our custom design services.

FR International, based in Carmel, Indiana, provides the commercial marketplace with all the advantages of a high-end decorative hardware brand combined with strong mechanical engineering and commercial hardware industry experience. Our designs are available on rugged commercial quality mechanical platforms that conform to market requirements.

**Find our full downloadable Frascio Design Catalog online at [FRInternational.com](http://FRInternational.com) or contact us for physical electronic media version.**



## Environmentally-friendly manufacturing

Frascio products are manufactured primarily from brass, zinc, stainless steel, and steel. Much of the raw material used to produce these parts comes from recycled metal. The percentage of postconsumer and post-industrial recycled content is estimated as follows:

- ♻️ The brass and zinc materials that are used to make many Frascio products typically contain 80-100% recycled material, a combination of melted scrap metal and reclaimed by-products.
- ♻️ The post-industrial recycled content of steel used to make Frascio products is approximately 30-40% (Approximately 30%-40% of the metal used to produce Frascio products is either scrap metal or other recycled material that is melted in the furnace)
- ♻️ Stainless steel that is used in Frascio products has a post-industrial recycled content of approximately 70%, and a post-consumer recycled content of approximately 8%.
- ♻️ Approximately 40% of the packaging that is used by Frascio is comprised of recycled material

The above percentages show an average of Frascio's overall production. Actual percentages on any order will vary based on the specific products that comprise that order as well as the mill source.

When no longer needed, Frascio brass, stainless, and zinc parts are 100% recyclable.

Frascio is committed to responsible business and manufacturing practices that help conserve resources and protect our environment.

# Lever Design Options

Choose from hundreds of high-end decorative lever designs engineered using the highest quality materials and crafted with careful attention to detail.

Many more designs are available in our product catalog at [www.FRIInternational.com](http://www.FRIInternational.com).



110 Apollo



146 Star



200 Easy



220 Alpha



230 Beta



250 Butterfly



260 Cosmos



270 Metro



280 Straight



300 Laguna



380 Julius



400 Soft



401 Soft Plus



620 Tuke



630 Eidos



640 Kuma



650 Kalé



700 Flow



710 Aria



720 Sweep



744 Sigma



745 Modulo L



813 Verano



823 Saló



900 Stella



903 Trevi



937 Corina



939 Allegra



1023 Ursa



1210 Filoo



1220 Anatra



1270 Drop



1290 Form



1320 Decima



1330 Seppia



1340 Florence



1350 Adria



1520 Leaf



1540 Chill



1550 Chill+



1580 Rise



2250 Halley



5013 Urbano



5019 Band



5100 Lucia



5130 Delta



5150 Gamma



5200 Loft



5219 Misano



5300 Omega



5350 Raffaella



5550 Laura



5650 Gabriella



5700 Loredana



5702 Stefano



5750 Adina



5752 Ellise



5800 Antonella



5804 Maretto



5820 Forino



5850 Christina



5855 Sophia



6118 Lorenzo



6202 Decora



6208 Esago



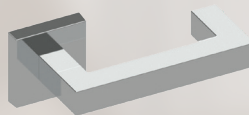
6210 Base



6215 Valenza



6218 Simpla



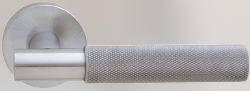
6220 Kappa



6237 Amara



6280 Vienna



6587 Tacta



6592 Cutlass



6594 Modulo B



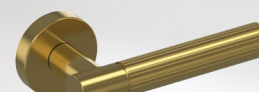
6612 Marco



6774 Scala



6716 Arno



6891 Marino



6929 Tivoli



6832 Stacked Coin

View more lever designs in our product catalog at [www.FRInternational.com](http://www.FRInternational.com)

# M500 Series Mortise Locks

**Frasco M500 Series mortise locks are ideal for use in offices, multi-family residential, hospitality, and other applications where decorative lever trim must also provide security and rugged dependability.**

- M500 Series locks are available with virtually all Frasco decorative levers and knobs shown in this condensed product guide and in our full Frasco Design Catalog. In addition, more designs are available from our vast uncatalogued library.
- A wide variety of mechanical and electrified lock functions are available. To view the full range of configurations, refer to our M500 Series function chart.
- A wide range of roses, escutcheon plates, and turnknob/release designs are available.
- A full range of housings accommodating the industry's most popular cylinder and core configurations are available.



Specifications	
Applications	For commercial buildings where the finest mortise locks are required
Certifications	ANSI A156.13 Series 1000, Grade 1 operational. UL Listed for 3-Hour fire rating
Case Size	4-5/16" x 6" x 1" (110 mm x 152 mm x 25 mm)
Armor Front	1-1/4" x 8" x 7/32" (32 mm x 203 mm x 5 mm)
Backset	2-3/4" (70 mm)
Door Preparation	Conforms to ANSI A115.1
Door Range	1-3/8" (35mm) to 2-1/2" (64 mm) steel door, 1-3/4" (45mm) to 2-1/2" (64mm) wood door
Beveled Doors	Self-adjusting case
Case Handing	Field reversible without removing cover
Strike	Curved lip non-handed. Custom lip lengths at 1/8" (3 mm) increments available
Spindles	Breakable to prevent the lock case from unlocking or being damaged

## M500 Rose Options



**SM**  
Small  
52 mm (2")  
**SM-58**  
Small Retrofit  
58 mm (2-1/4")



**SMT**  
Small  
Traditional  
58 mm (2-1/4")



**SMG**  
Small Deco  
52 mm (2")



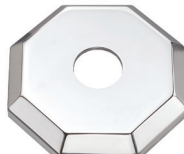
**SME**  
Small Ellipse  
54 mm (2")



**SMQ**  
Small Square  
54 mm (2")



**SMQC**  
Small  
Chamfered  
Square  
54 mm (2")



**SMO**  
Small  
Octagonal  
60 mm (2-5/16")



**SMQE**  
Small Square  
Extended  
65 mm (2-1/2") x  
102 mm (4")

## Turnknob Design Options



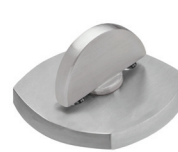
**M61 Round**  
Smooth Rose



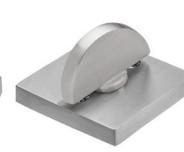
**M61-T Round**  
Traditional Rose



**M61-O Round**  
Octagonal Rose



**M61-E Ellipse**  
Ellipse Rose



**M61-Q Round**  
Square Rose



**RM61-Q**  
Rectangular  
Square Rose



**H41**  
Accessibility



**R71**  
Accessibility



**R71-Q**  
Accessibility  
Square Rose

\* CF Concealed Fastener option available on round roses

## Plate Options



**11010**  
Fairfax  
248 x 58 mm  
(9-3/4 x 2-1/4")



**12010**  
Pallas  
248 x 58 mm  
(9-3/4 x 2-1/4")



**18010**  
Riviera  
239 x 45 mm  
(9-3/8 x 1-3/4")



Custom plate  
options also  
available.

\***18020** Messina  
Wider Plate Available  
239 x 54mm (9-3/8 x 2-1/8")

## Emergency Release/Indicator Options



**EMT**



**EMTI**  
with color  
indicator  
window



**EMTI-VO**  
with VAC/OCC  
indicator  
window



**EMT-Q**



**EMTI-Q**  
with color  
indicator  
window



**EMTI-Q-VO**  
with VAC/OCC  
indicator  
window



**GVRO**  
occupancy  
indicator



**GVRO-Q**  
Square  
occupancy  
indicator

# T600 Tubular Latchset

for 2-1/8" Bored-Hole Application

Frascio's T600 latchset is designed for maximum reliability, use with standard door prep, and easy time-saving installation — a proven favorite of designers everywhere.



T600 Series Rose Options — Fully interchangeable within the T600 Series



1903 Contemporary



1905 Traditional



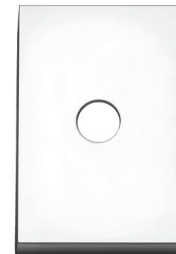
1912 Smooth



1906 Ellipse

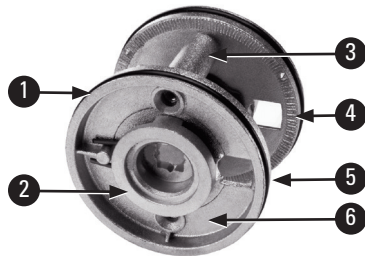


1912Q Square



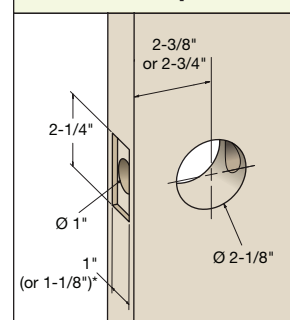
1912QE Square Extended

## Superior features and benefits of our T600 interlocking backplate



- 1 Cast-in latch stabilizing legs connect with latch body to provide stability
- 2 Solid spring-loaded hubs provide excellent lever support
- 3 Interlocking legs allow easy self-guiding throughbolt installation
- 4 Cast in grip texture provides tight surface grip and resists rotation
- 5 Durable rubber o-ring attaches securely to large format roses
- 6 Solid cast body provides sturdy mounting for roses

### T600 Door Prep



Dimensions are approximate and for reference only. Please refer to Frascio template.

T600 Specifications	
Application	Residential and hospitality interior doors requiring passage, privacy, communicating, and dummy trim functions
Material	Brass, stainless steel, and die cast zinc levers and roses. Latch faceplates and strikes stainless steel
Backset	2-3/8" (60mm) and 2-3/4" (70mm)
Handing	Non-handed trim set. Latchbolt handing and bevel is field reversible
Door Thickness Range	1-3/8" (35mm) to 2" (51mm); thick door parts kit available
Door Preparation	2-1/8" Bored Hole — refer to door prep template for specifics. ANSI 160 or ANSI 161
Faceplate	1" x 2-1/4" square corner standard; 1-1/8" wide option available
Strike	1-1/8" x 2-3/4" T Strike with 1-1/8" lip standard; Full Lip Strike, 1/4" Radius Full Lip Strike and ASA Strike options available

Complies with ANSI Grade 2 cycle requirements



# T700 Tubular Latchset

for Custom Small Bored-Hole Application



The Frascio T700 is an innovative small rose trim solution matching the tubular latchsets' appearance with mortise locks — when elegance and continuity matter.

## T700 Series Rose Options — Fully interchangeable within the T700 Series



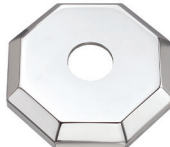
**SMT**  
Small Traditional



**SM** Small



**SME** Ellipse



**SMO**  
Small Octagonal



**SMQ**  
Small Square

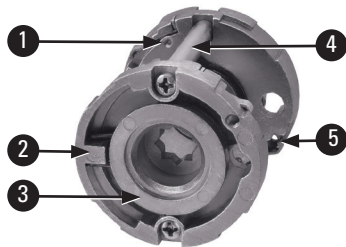


**SMQC** Small  
Chamfered Square

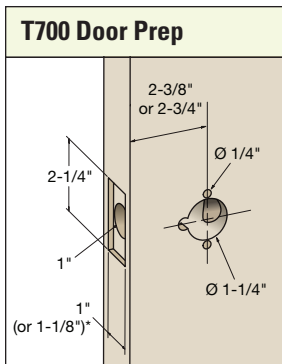


**SMQE**  
Small Square  
Extended

## Superior features and benefits of our innovative T700 mounting backplate



- 1 **Innovative rose mounting system** securely attaches rose to door. Exceeds ANSI Grade 1 axial pull resistance (Provides secure side option if desired)
- 2 **Solid cast body** provides sturdy mounting for a variety of rose shapes and sizes in the series
- 3 **Solid spring-loaded spindle hubs** provide excellent lever support
- 4 **Durable steel throughbolt post system** provides commercial strength as well as flexibility for door thickness variation
- 5 **Innovative concealed fastener system** eliminates need for multi-piece roses and posts that can be removed or tampered with



Dimensions are approximate and for reference only. Please refer to Frascio templates.

T700 Specifications	
Application	Residential and hospitality interior doors requiring passage, privacy, communicating, and dummy trim functions
Material	Brass, stainless steel, and die cast zinc levers and roses. Latch faceplates and strikes stainless steel
Backset	2-3/8" (60mm) and 2-3/4" (70mm)
Handing	Non-handed trim set. Latchbolt handing and bevel is field reversible
Door Thickness Range	1-3/8" (35mm) to 2" (51mm); thick door parts kit available
Door Preparation	Custom small hole door drilling required — refer to door prep templates for specifics
Faceplate	1" x 2-1/4" square corner standard; 1-1/8" wide option available
Strike	1-1/8" x 2-3/4" T Strike with 1-1/8" lip standard; Full Lip Strike, 1/4" Radius Full Lip Strike and ASA Strike options available



Complies with ANSI Grade 2 cycle requirements

# Auxiliary Locks

## Mortise Dead Lock



### MD Series

Ideal for use as an auxiliary lock or as a primary locking device where latching is not required.

## Tubular Deadbolts



### D500 Series

#### Square Deadbolt Sets

Available in keyed cylinder, coin release, and occupancy indicator configurations. An ideal complement to the square 1912Q T600 Series leverset rose.



### D600 Series

#### Round Deadbolt Sets

Available in keyed cylinder, coin release, and occupancy indicator configurations. An ideal complement to the round 1912 T600 Series leverset rose.



### B80/81

#### Communicating Deadbolt

Single side deadbolt for use in connecting or exit door applications

# Accessories

## Floor Stops

Frascio offers a variety of door stops, in wall, hinge, and floor stop configurations. Shown below are a sampling of floor stop designs available.



## Cabinet Pulls

Cabinet or furniture pulls are available on a make-to-order basis to for millwork applications. Frascio is able to provide complementary design suiting to larger door pulls and to certain door knob and lever designs. Shown below is a sampling representing the category.



# Door Pulls

## Architectural Pulls

Frascio architectural door pulls are available in both straight and offset versions and can be configured in an unlimited variety of shapes, sizes, materials, and finishes. Our pulls can easily be tailored to meet special project requirements.

In addition, we also proudly offer a range of standard ladder pulls in the most popular sizes, and with convenient availability. Shown in this chart are typical ladder pull sizes, custom CTC sizes are also available.

Typical Sizes (custom available)	
Overall	CTC
12"	8"
18"	14"
24"	18"
36"	30"
48"	36"
60"	48"
72"	60"
84"	72"
96"	84"



## Decorative/Custom Pulls

Frascio has an experienced and highly capable engineering department able to bring your ideas to life. We use 3D CAD design technology to engineer your ideas from concept to image renderings, and oversee through prototypes to production.

We welcome the opportunity to create a custom solution for you.



## Zermat Collection Ornate Pulls

The Zermat Collection is an exclusive range of door pull designs inspired by classic European architecture. Featuring outstanding detail, craftsmanship, and nuanced finishes, Zermat pulls are also presented with a companion range of complementary lever handles and accessories.



## Locking Pulls

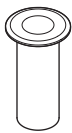
Frascio locking door pulls add contemporary design and security functionality to door openings of all sizes. The concealed deadbolt locking system inside the pull provides a clean and elegant installation that eliminates the need for unsightly patch fittings or rails on glass door applications.

- Cylinder and turnknob located at a convenient height. Compliant to ADA standards.
- Multiple size, shape, design, and finish options and custom specification capability allow for unlimited combinations
- Suites with a wide range of Frascio door pulls, lever handle designs and trim components

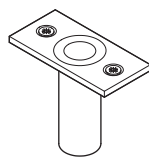
## Strike Options

Bottom locking

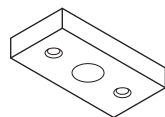
**LDPS1**  
Floor (standard)  
1-3/16" Diameter



**LDPS2**  
Floor with flange  
Flange is 2-3/4" x 1-3/8"



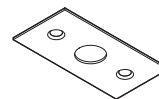
Top locking



**LDPS4**  
Top block (standard)



**LDPS5**  
Top transom—single



**LDPS3**  
Top plate

## Finish Options



**629**  
Polished  
Stainless  
Steel



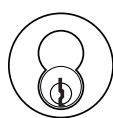
**630**  
Satin  
Stainless  
Steel



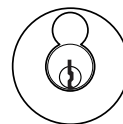
**622**  
Matte  
Black

## Cylinder Options

Configured to standard SFIC, LFIC, non-interchangeable core, and others.



SFIC



LFIC

Sargent  
Yale  
Medeco  
Schlage  
Corbin Russwin

Features
Multiple lengths available, including custom
Various shapes and designs available, including custom
Multiple operating configurations available; standard is key operated from exterior, turnknob from interior
Can be used with both swinging and sliding doors
Non-keyed privacy function available as well as matching non locking pulls (dummy)
Locking options include: bottom bolt standard, top bolt, or dual locking available
Bolt location: approximately 2-5/8" from face of door to centerline of bolt
5/8" stainless steel deadbolt with 1-1/4" throw. Includes dust proof floor strike.
Standard door thickness range: 5/16"–3/4" glass or solid panel; 1-3/4" to 2-1/4" aluminum, hollow metal, or wood doors



# Sliding Door Locks and Trim

## Recessed Trim for Sliding Door Locks

Our Frascio recessed flush cup trim options are compatible with SL1, SL2 or SL6 sliding door lock mechanisms, shown below.

Each trim shape is available in both privacy (requiring a lock mechanism) and passage functions. Finger edge pull options available, refer to Frascio Design Catalog.



RD – Round



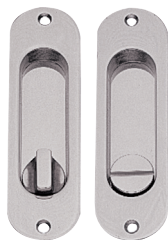
SQ – Square



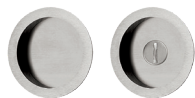
TD – Teardrop



RT – Rectangle



OV – Oval



RN – Round



SR – Square



RC – Rectangular



OL – Oval



Round

Square



Rectangle



Oval

## Flush Pulls

Frascio offers a wide range of make-to-order flush recessed pulls for sliding pocket and barn door applications. Stainless steel, brass, bronze, and aluminum materials are utilized depending on the requirements of the project. Shown below are a few shape and style examples.

## Sliding Door Lock Mechanism Options



**SL1: Hook Bolt**  
Standard duty hookbolt lock for residential and hospitality.



**SL2: Expanding Bolt**  
Heavy duty and rugged, this robust lock can be used in a variety of applications and is activated by turnknob, coin release, or keyed cylinder.



**SL5: Expanding Bolt**  
This robust barn door lock can be locked by key outside or turn knob inside. Vertically-mounted lever retracts the deadbolt and pulls the door open in one continuous motion.

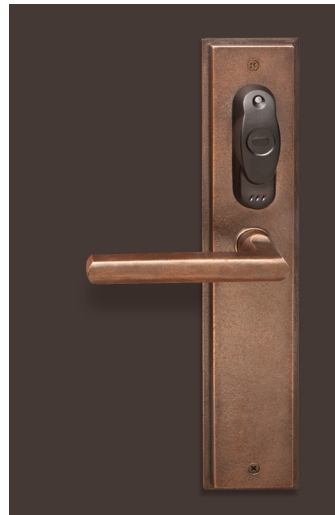


**SL6: Sliding Door Lock Series**  
SL6 Series lock and trim is ideal for sliding pocket and barn door applications, where space saving recessed trim is required and a retractable flush edge pull provides ergonomic convenience.  
\*EP6 Edge Pull passage only option available

# Compatibility Perfected

## Flexible Adaptation Solutions

Frascio's unique capability allows designers, architects and specifiers alike to maintain a high level of decorative consistency throughout the project all while meeting the most stringent mechanical and security requirements.



### Electronic access control

Many Frascio lever designs can be adapted for use with the industry's most popular access control systems to provide a fully-suited design package for your project. Options are available for both sectional rose and escutcheon trim configurations.



### Mortise locks and exit devices

Frascio leverset adaptation trim is available for all major ANSI mortise lock brands. Lever adaptations are available for nearly all major exit device brands.



All logos and trademarks are for illustration purposes only and are the property of their respective owners.

# Responsive Creativity

## Unlimited Possibilities

Your creativity can take shape in a variety of different forms, ranging from design modifications for our existing products, to all new designs for levers, roses, escutcheons, or pulls.

If you can imagine it, our talented design team can figure out how to engineer and produce it. We use 3D CAD technology to bring your ideas to life.

## Deliver something remarkable without creative compromise?

If you're looking for something out of the ordinary for your project, getting started has never been easier. You have our commitment to make the process seamless and satisfying. Of all the tasks you and your team have to manage, searching for someone to develop the design solution you need shouldn't be one.

How can we be of assistance?



Frascio offers rapid 3D prototyping to create physical samples for a touch-and-feel review.

**FR International, LLC**  
1011 3rd Avenue S.W.  
Carmel, Indiana USA 46032  
Tel: (317) 663-0030  
Fax: (317) 663-0029  
Toll Free: 1-800-238-9711  
[www.FRInternational.com](http://www.FRInternational.com)

