

Frascio®

The California Collection

Return To Door-compliant designer hardware



The California Collection

Frascio Return To Door (RTD) levers are inspired by and matched in most cases with a standard Frascio lever, and have been designed to comply with the California requirement that the lever returns to within ½" of the face of the door.

RTD levers can be used on an as-needed basis where required to conform to code, such as in corridor applications and public space egress. As a result of the flexible mounting platform systems offered by FR International, RTD and standard levers can be combined on any given leverset.

California Collection RTD levers

6744 Modulo C



6719 Corso



6707 Luca



6210 Base



1545 Dario



Matching lever without return to door

745 Modulo L



903 Trevi



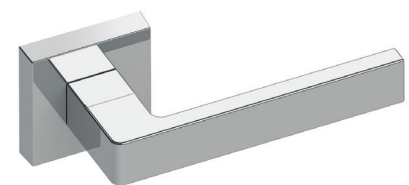
930 Aton



270 Metro



1540 Chill

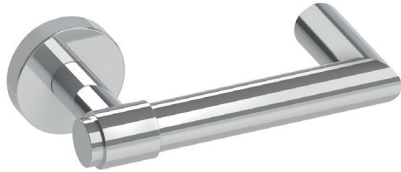


California Collection RTD levers

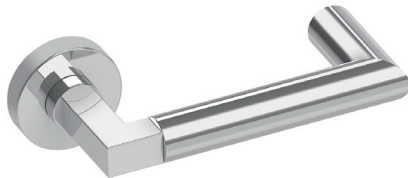
6502 Brio



5020 Link



6846 Elio



5752 Ellise



5000 Alessia



5150 Gamma



Matching lever without return to door

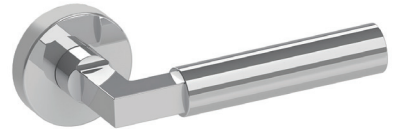
6353 Marta



5019 Band



6612 Marco



5750 Adina



5200 Loft



5100 Lucia



California Collection RTD levers

5702 Stefano

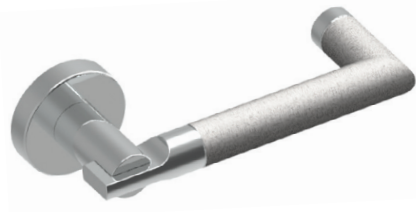


Matching lever without return to door

5700 Loredana



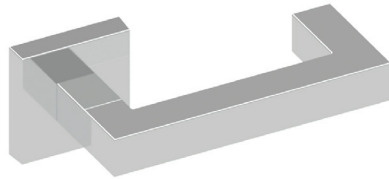
6776 Elena



900 Stella



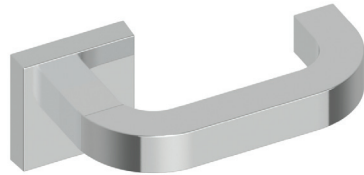
6220 Kappa



220 Alpha



6230 Tau



230 Beta



The following RTD design options do not have a specific non-RTD match.

5130 Delta



5810 Sampi



6787 Tau



More Frascio lever designs can be viewed on our website. FR International can custom design Return To Door levers to meet your design needs. Contact us directly to discuss your project's requirements.

